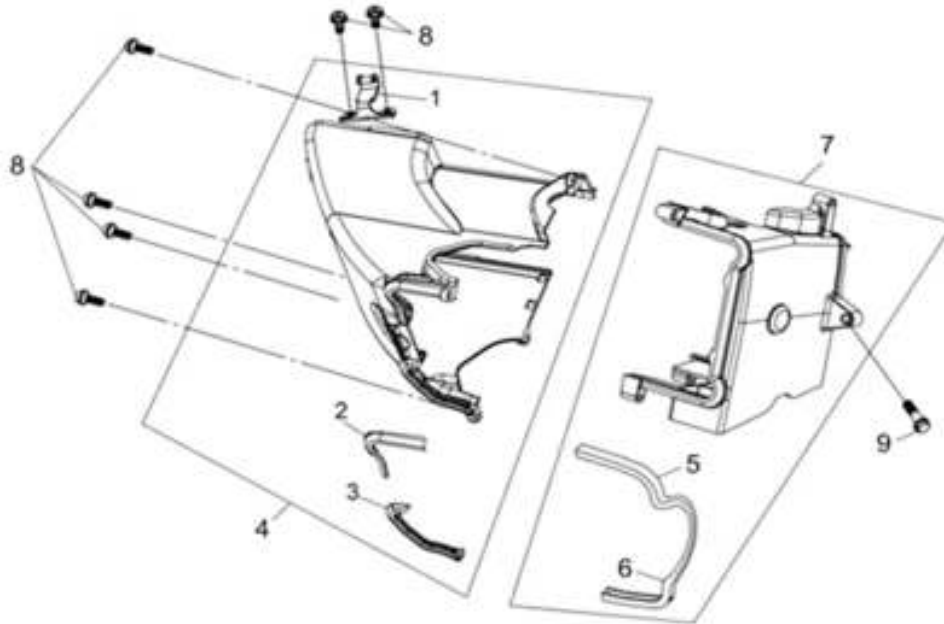


**FAN COVER - SHROUD**  
**NÁP QUẠT - NÁP DẪN HƯỚNG**

**E01**



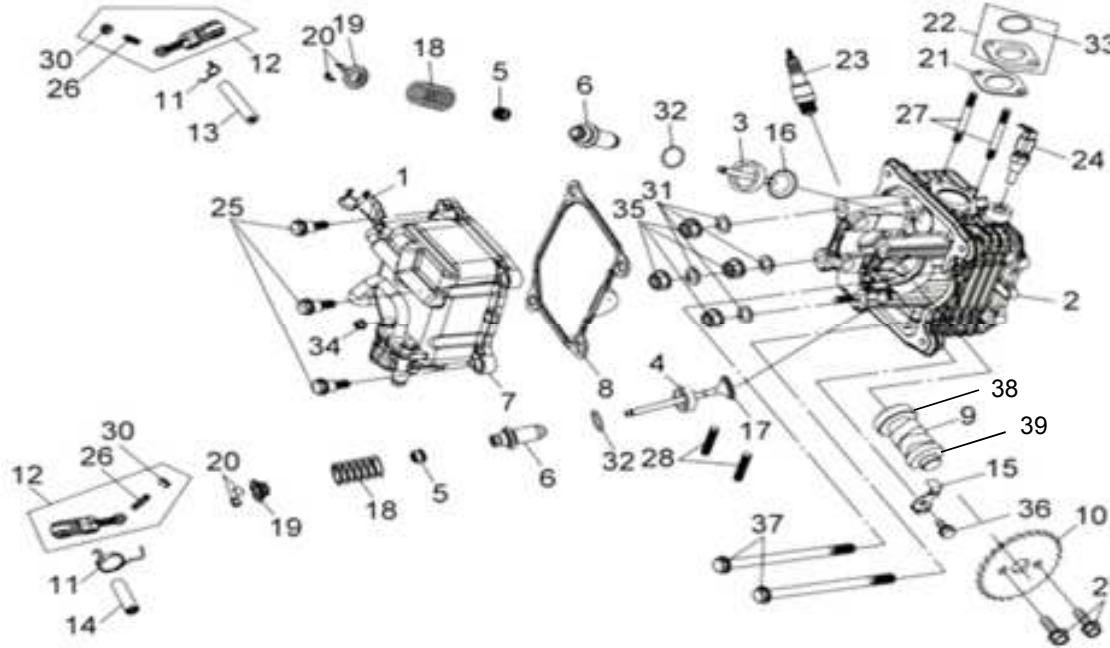
**Service Item**  
**Phụ Tùng Cung Cấp**

2	19625-F8A-000
3	19626-F8A-000
4	1962A-VJ3-000
5	19635-F8A-000
6	19636-F8A-000
7	1963A-VJ3-000
8	93904-35380
9	96001-06028-08

STT No.	Mã số phụ tùng Part No.	Tên phụ tùng Description	UNIT PRICE	Mã E/C.		Ghi chú Remark
				VJ7	E/C.	
1	90611-FDA-000	Pipe Clamp		1		
2	19625-F8A-000	Shroud A Seal A		1		
3	19626-F8A-000	Shroud A Seal B		1		
4	1962A-F6K-0003-L1	Shroud A Ass'y	26.60	1		
5	19635-F8A-000	Shroud B Seal A		1		
6	19636-F8A-000	Shroud B Seal B		1		
7	1963A-VJ3-0000	Shroud B Assy.	26.60	1		
8	93904-35380-00	Tapping Screw 5*16	0.80	6		
9	96001-06028-07	Sh. Flange Bolt 6*28	0.70	1		

**CYLINDER HEAD  
ĐẦU XI LẠNH**

**E02**



**Service Item  
Phụ Tùng Cung Cấp**

2	12200-VJ3-900
5	12209-H6B-900
7	12301-VJ3-900
8	12391-F8A-000
9	14100-VJ3-900
10	14105-F6A-000
11	14439-VJ3-000
12	1443A-VJ3-000
13	14451-F8A-000
14	14461-VJ3-000
15	14457-F8A-000
16	14711-VJ3-000
17	14721-VJ3-000
18	14751-ARA-900
19	14771-F6A-000
20	14781-M9Q-000

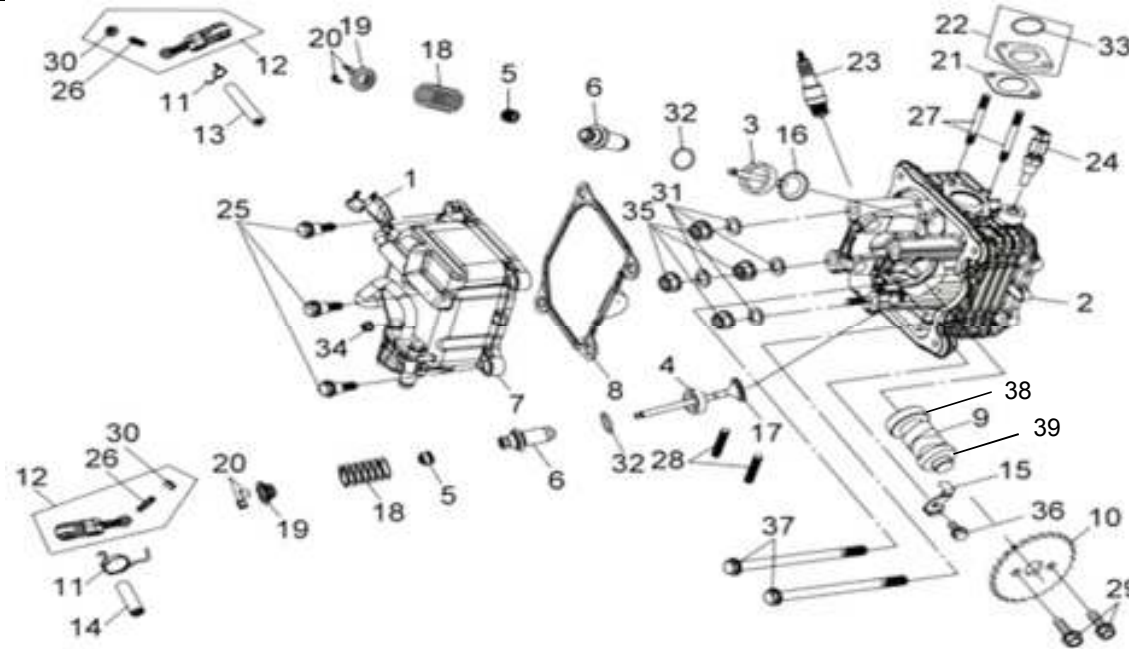
STT No.	Mã số phụ tùng Part No.	Tên phụ tùng Description	UNIT PRICE	Mã		Ghi chú Remark
				VJ7	E/C.	
1	11832-VJ3-0001	Hitension Cord Clamp.	2.70	1		
2	12200-VJ3-0003	Cylinder Head Comp.	332.90	1		
3	12202-M92-310	Inlet Valve Seat		1		
4	12203-H42-300	Exhaust Valve Seat		1		
5	12209-H6B-000	Valve Stem Seal	6.50	2		
6	12237-F6A-3000	Inlet Valve Guide	13.30	2		
7	12301-VJ3-900	Cylinder Head Cover		1		
8	12391-F8A-0001	Head Cover Packing	18.30	1		
9	14100-VJ3-0005	Cam Shaft Comp.	233.00	1		
10	14105-F6A-0000-CN1-V	Cam Sprocket	16.70	1		
11	14100-VJ3-0005	Rocker Arm Torsion Spring	233.00	2		
12	1443A-VJ3-0000	Valve Rocker Arm Assy.	73.20	2		
13	14451-F8A-0000-L1	In. Rocker Arm Shaft	10.00	1		
14	14461-VJ3-000	Ex. Rocker Arm Shaft		1		
15	14457-F8A-0000-L1	Cam Shaft Setting Plate	1.70	1		
16	14711-VJ3-0000	In. Valve	24.90	1		

**CYLINDER HEAD  
ĐẦU XI LẠNH**

**E02**

**Service Item**

**Phụ Tùng Cung Cấp**

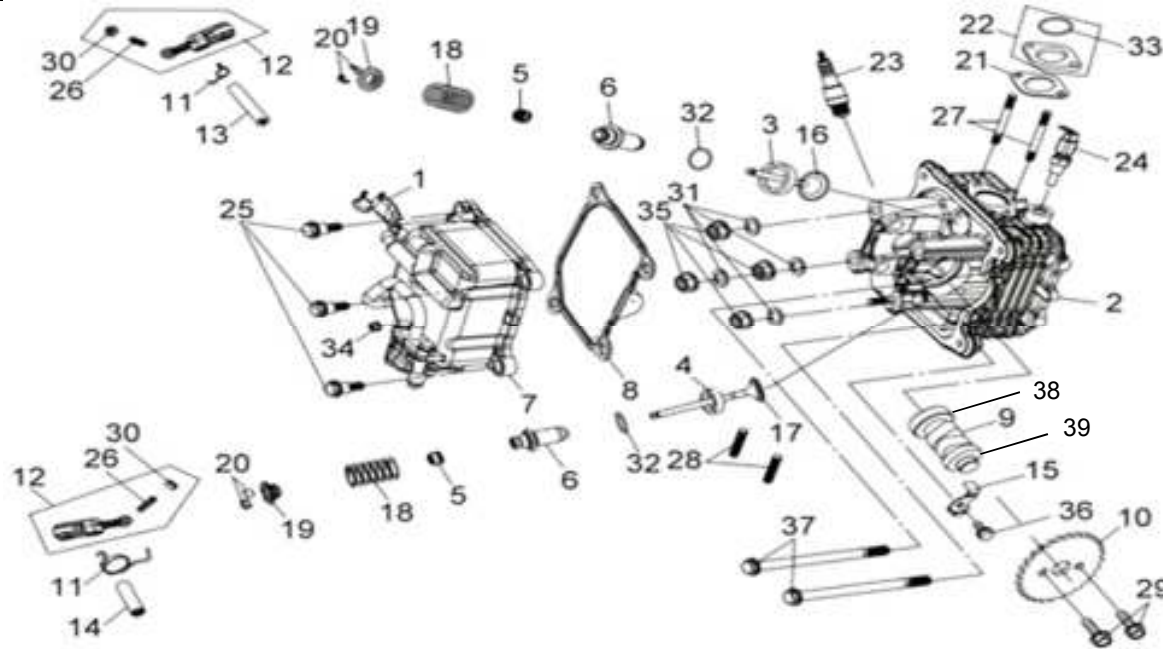


21	16201-M9T-000
22	16211-M9Q-000
23	98056-57718
24	37880-A5L-000
25	90002-M9Q-000
26	90012-M9Q-000
27	90033-M92-000
30	90206-HLK-000
31	90442-028-000
32	91305-M9Q-000
34	94050-06000
35	94050-08000
36	96001-06012-00
37	96001-06095-08
38	96100-62033-10
39	96120-60013-10

STT No.	Mã số phụ tùng Part No.	Tên phụ tùng Description	UNIT PRICE	Mã		Ghi chú Remark
				VJ7	E/C.	
17	14721-VJ3-0000	Exh. Valve	44.90	1		
18	14751-ARA-9000-L1	Valve Spring	10.00	2		
19	14771-F6A-0001	Retainer Valve Spring	12.30	2		
20	14781-M9Q-0000	Valve Cotter	2.40	4		
21	16201-M9T-0001	Carb. Insulator Gasket	1.00	1		
22	16211-M9Q-0000-VN	Carb. Insulator Assy.	3.30	1		
23	1PN CR7HSA	Plug. Spark (NGK CR7HSA)	17.60	1		
24	37880-A5L-0000	Eng Temperature Sensor	83.20	1		
25	90002-HMA-0001	Head Cover Bolt	2.30	4		
26	90012-M9Q-000	Tappet Adjusting Screw	4.10	2		
27	90033-M92-0000	Stud Bolt 6*55	3.60	2		
28	90034-HMA-0001	Special Stud Bolt 8*40	2.00	2		
29	90083-B12-000	Knock Bolt 6mm	0.80	2		
30	90206-HLK-000	Tappet Adjusting Screw Nut	3.30	2		
31	90442-M8Q-0000-L1	Sealing Washer 8mm	1.00	4		
32	91305-M9Q-000	O-Ring 9 x 16	1.70	2		

**CYLINDER HEAD**  
**ĐẦU XI LẠNH**

**E02**

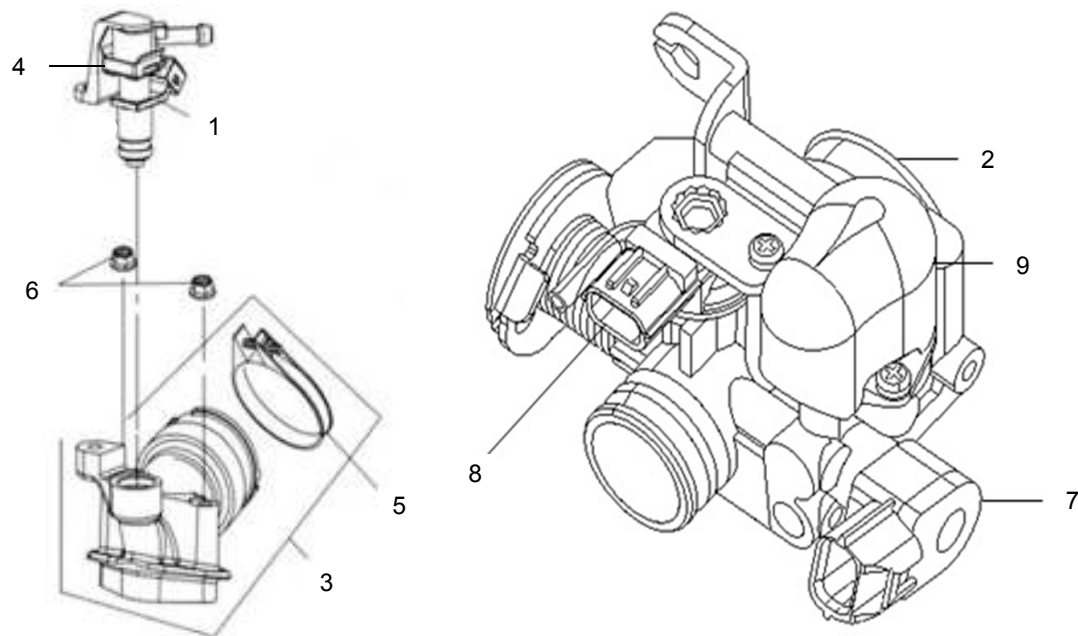


Service Item  
Phụ Tùng Cung Cấp

STT No.	Mã số phụ tùng Part No.	Tên phụ tùng Description	UNIT PRICE	Mã		Ghi chú Remark
				E/C.	VJ7	
33	91308-M9Q-000	O-Ring 27*2.0	1.00		1	
34	94050-06000-00	Flange Nut 6mm	0.70		1	
35	94050-08000	Flange Nut 8mm	0.70		1	
36	96001-06012-00	Sh. Flange Bolt 6*12	0.80		1	
37	96001-06095-08	Sh. Flange Bolt 6x95	1.00		2	
38	96100-62033-10-VN	Radial Ball BRG. 6203	8.70		1	
39	96120-60013-10	Readial Ball BRG. 6001ZC3			1	

**FUEL INJECTOR A'SSY**  
**HỆ THỐNG PHUN XĂNG**

**E03**



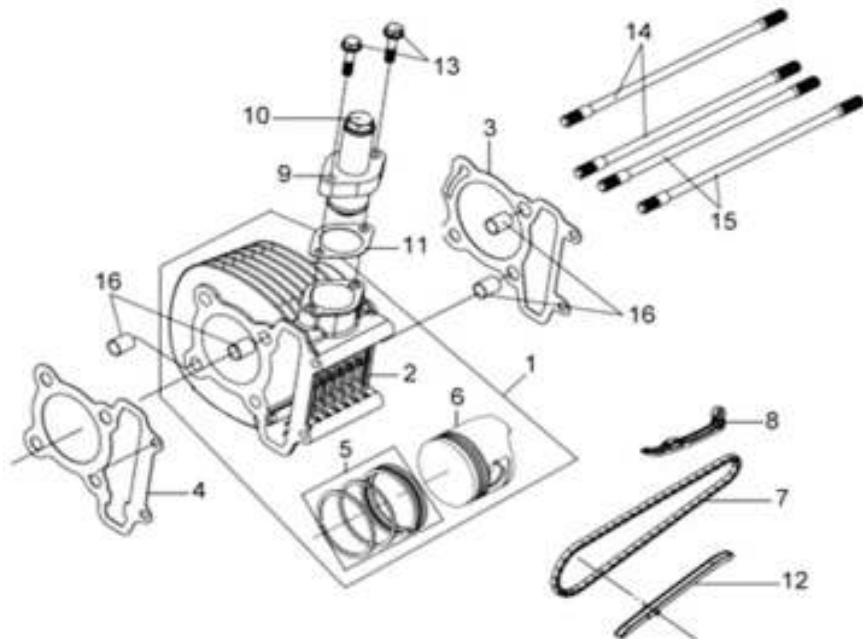
**Service Item**  
**Phụ Tùng Cung Cấp**

1	06414-F6K-000
2	16401-VJ3-000
3	1711A-VJ3-000
4	17120-F6K-000
5	90652-G03-000
6	94050-06000
7	3210A-VJ4-000
8	1614-906-000
9	16402-VJ3-000

STT No.	Mã số phụ tùng Part No.	Tên phụ tùng Description	UNIT PRICE	Mã E/C.		Ghi chú Remark
				VJ7		
1	06414-F6K-0000	Fuel Injector	220.20	1		
2	16401-VJ3-0000	Throttle Body Ass'y	715.60	1		
3	1711A-VJ3-0001	Inlet Pipe Ass'y.	73.20	1		
4	17120-F6K-0001	Fuel Injector Cap	99.90	1		
5	90652-G03-000	Insulator Band 40mm	10.20	1		
6	94050-06000-00	Flange Nut 6mm	0.70	2		
7	3210A-VJ4-0000	Throttle Position Sensor	20.60	1		
8	1614-906-0002	Map Sensor	277.60	1		
9	16402-VJ3-000	ISC Valve		1		

**CYLINDER - CAM CHAIN**  
**XYLANH - SÊN CAM**

**E04**



**Service Item**

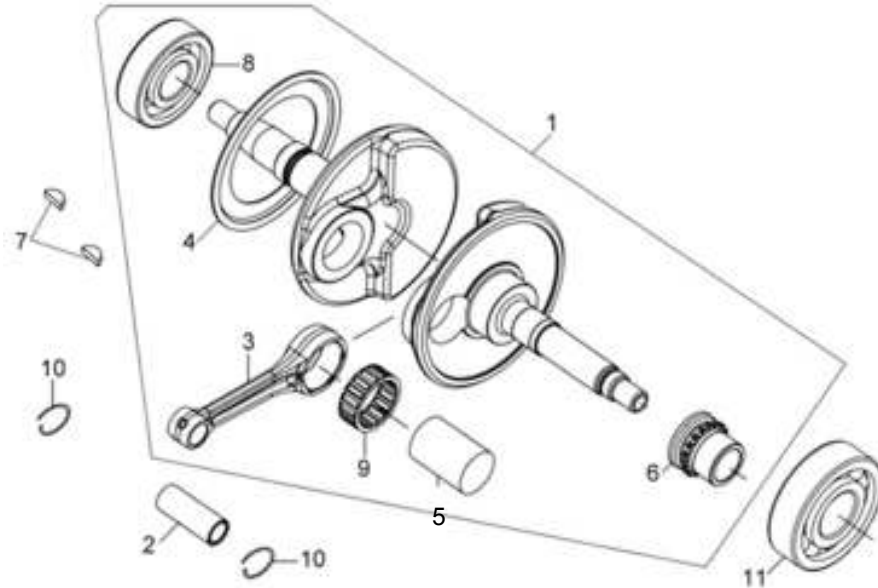
**Phụ Tùng Cung Cấp**

1	1210A-VVB-900
2	12100-VVB-900
3	12191-VSF-000
4	12251-H6B-000
5	13010-ADB-000
6	13101-VJ3-000
7	14401-M92-003
8	14510-F8A-000
9	14520-M9Q-000
11	14523-M9T-000
12	14610-F8A-000
13	90001-M9Q-000
14	90031-F8A-000
15	90032-M92-000
16	90703-M8Q-000

STT No.	Mã số phụ tùng Part No.	Tên phụ tùng Description	UNIT PRICE		Mã E/C.	Ghi chú Remark
				VJ7		
1	1210A-VVB-900	Cylinder Ass'y		1		
2	12100-VVB-0002	Cylinder Comp	266.30	1		
3	12191-VSF-0000	Cylinder Gasket	4.00	1		
4	12251-H6B-0002	Cylinder Head Gasket	13.30	1		
5	13010-ADB-0000	Piston Ring Set	26.70	1		
6	13101-VJ3-0000	Piston	46.60	1		
7	1CD SCR X 94L	Cam Chain	51.60	1		
8	14510-F8A-0001-L1	Cam Chain Tensioner	26.60	1		
9	14520-M9Q-0000	Tensioner Lifter Ass'y	49.30	1		
10	90005-M9Q-0000	Pan Screw 6*6	0.60	1		
11	14523-M92-0001	Tensioner Lifter Gasket	1.00	1		
12	14610-F8A-0001-L1	Cam Chain Guide	11.70	1		
13	90001-M9Q-0000	Sh Flange Bolt 6*22	0.60	2		
14	90031-F8A-0001	Cylinder Stud Bolt A	4.70	2		
15	90032-M92-0001	Cylinder Stud Bolt B	4.00	2		
16	90703-M8Q-000	Dowel Pin 10*14		4		

**CRANK SHAFT  
BỘ TRỤC KHUỖU**

**E05**



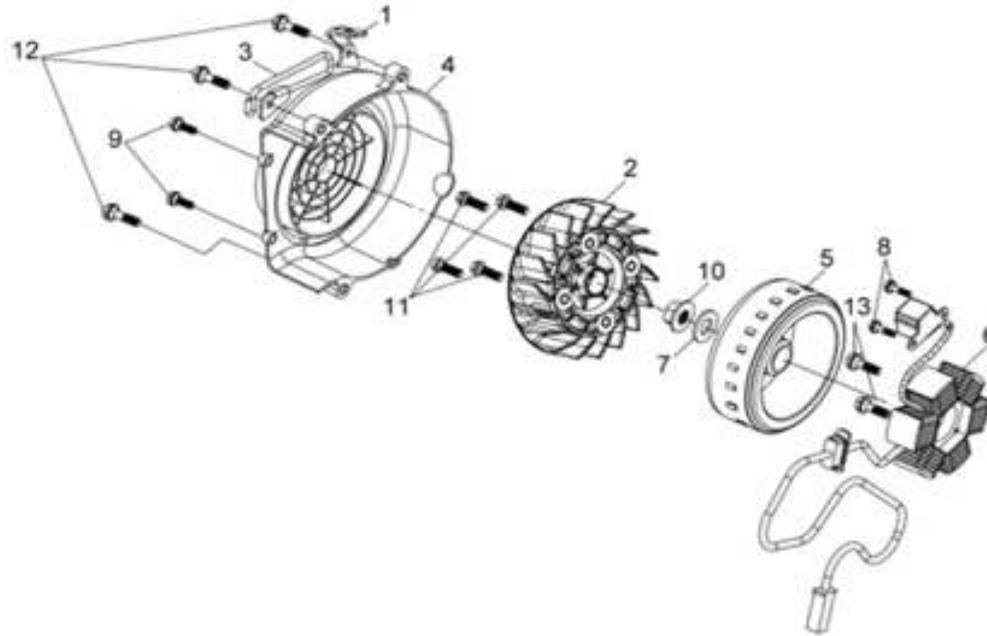
**Service Item  
Phụ Tùng Cung Cấp**

1	13000-VJ3-000
2	13111-M9Q-000
3	13201-VJ1-000
5	13381-M92-300
6	14311-VJ3-000
7	90702-M9Q-000
8	91001-H6B-300
9	91101-M9Q-000
10	94601-15000
11	96100-62073-00

STT No.	Mã số phụ tùng Part No.	Tên phụ tùng Description	UNIT PRICE		Mã E/C.	Ghi chú Remark
				VJ7		
1	13000-VJ3-0000	Crank Shaft Comp.	332.90	1		
2	13111-M9Q-0000	Piston Pin	6.60	1		
3	13201-VJ1-0000	Connecting Rod	59.90	1		
4	13371-M92-300	R. Crank Side Plate		1		
5	13381-M92-3004-L1	Crank Pin	16.70	1		
6	14311-VJ3-0000	Timing Sprocket	20.00	1		
7	90702-M9Q-0000	Woodruff Key 25*14*4	2.80	2		
8	91001-H6B-3001	Radial Ball Brg. 63/22	34.90	1		
9	91101-M9Q-0000-K5	Connecting Rod Bearing	22.70	1		
10	94601-15000-00	Piston Pin Clip 15mm	0.40	2		
11	96100-62073-00	Radial Ball Bearing. 6207	8.70	1		

**GENERATOR  
BỘ PHÁT ĐIỆN**

**E06**



**Service Item  
Phụ Tùng Cung Cấp**

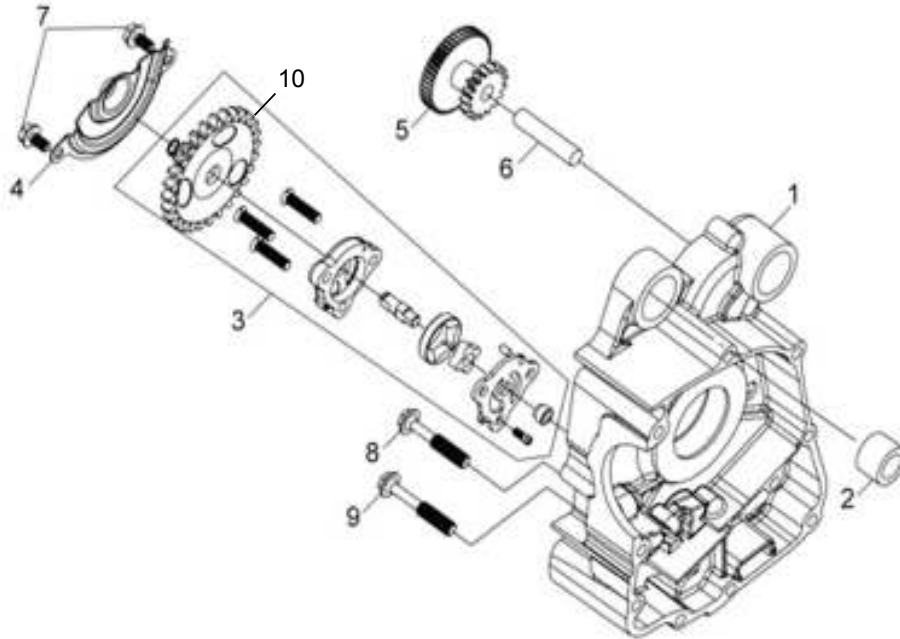
1	18659-VJ3-000
2	19510-VT3-000
3	19613-F8A-000
4	19610-VJ3-000
5	31110-F6K-000
6	31120-VJ3-000
7	90440-M9Q-000
8	92101-05012-0A
9	93904-35380
10	94050-12000
11	95701-06018-08
12	96001-06025-07
13	96001-06028-08

STT No.	Mã số phụ tùng Part No.	Tên phụ tùng Description	UNIT PRICE	Mã		Ghi chú Remark
				VJ7	E/C.	
1	18659-VJ3-000	A.I.S.V. Stay Comp.		1		Không Dùng
2	19510-VT3-0001	Cooling Fan Comp.	11.60	1		
3	19613-F8A-0003-L1	Start. Motor Cord Clamper	4.00	1		
4	19610-VJ3-0000	Fan Cover Comp	11.60	1		
5	31110-F6K-0000	Flywheel Comp	99.90	1		
6	31120-VJ3-0002	Stator Comp	149.80	1		
7	90440-M9Q-0000	Plain Washer 12mm	1.00	1		
8	92101-05012-0A	Hex Bolt 5x12	0.80	2		
9	93904-35380-00	Tapping Screw 5*16	0.80	2		
10	94050-12000-L1	Flange Nut 12 mm	1.60	1		
11	95701-06018-07	Flange Bolt 6x18	0.40	4		
12	96001-06025-07	Sh. Flange Bolt 6*25	0.30	4		
13	96001-06028-07	Sh. Flange Bolt 6x28	0.70	3		



**OIL PUMP - R. CRANK CASE**  
**BƠM NHỚT - LỐC MÁY PHẢI**

**E07**



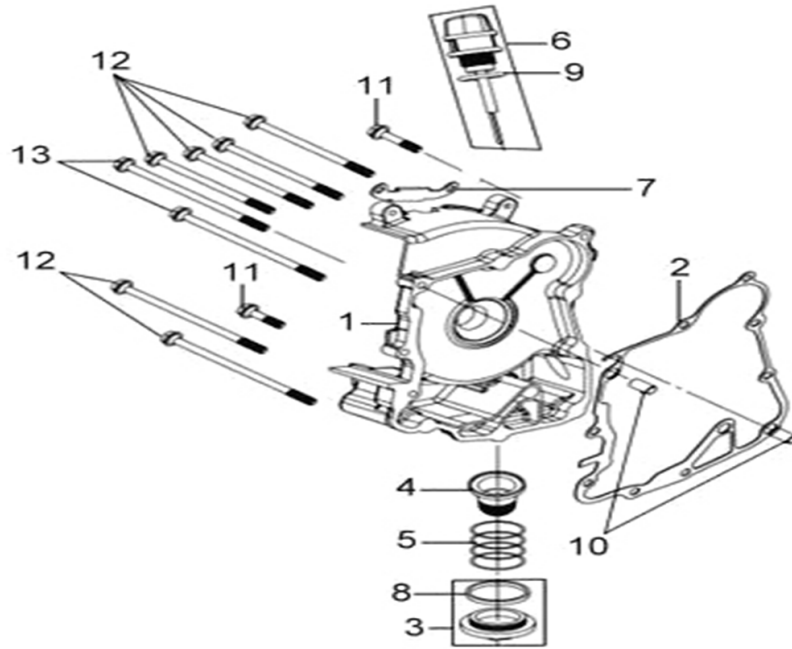
**Service Item**  
**Phụ Tùng Cung Cấp**

1	11100-VJ3-000
2	11102-M9Q-300
3	15100-F6A-000
4	15711-M92-000
	15711-VJ6-000
5	28101-M9Q-000
	28101-VJ6-000
6	28102-M9Q-000
7	96001-06012-08
8	96001-06045-08
9	96001-06055-08
10	15133-F6A-000

STT No.	Mã số phụ tùng Part No.	Tên phụ tùng Description	UNIT PRICE	Mã		Ghi chú Remark
				VJ7	E/C.	
1	11100-VJ3-0001-SP	R. Crank Case Comp.	199.70	1		
2	11102-M9Q-3000	Eng. Hanger Rubber Bush	10.40	1		
3	15100-F6A-0006-L1	Oil Pump Assy.	47.90	1		
4	15711-M92-0001	Oil Pump Separator	3.30	1		
5	28101-M9Q-0000	Starter Reduction Gear	30.00	1		
6	28102-M9Q-0000	Start. Red. Gear Shaft	5.00	1		
7	96001-06012-08	Flange Bolt Sh. 6*12	0.80	2		
8	96001-06045-08	Flange Bolt Sh. 6*45	1.00	1		
9	96001-06055-08	Flange Bolt Sh. 6*55	1.30	1		
10	15133-F6A-000	Oil Pump Driven Gear		1		

**RIGHT CRANK CASE COVER  
NÁP MÁY PHẢI**

**E08**



**Service Item  
Phụ Tùng Cung Cấp**

1	11331-VJ3-000
2	11394-VJ3-000
3	1236A-H69-000
4	15421-M9Q-000
5	15426-M9Q-000
6	1565A-VJ3-000
7	32961-F6A-000
8	91302-M9Q-000
9	91307-M8Q-000
10	94301-08140
11	96001-06030-08
12	96001-06095-08
13	96001-06100-08
14	12361-H69-000

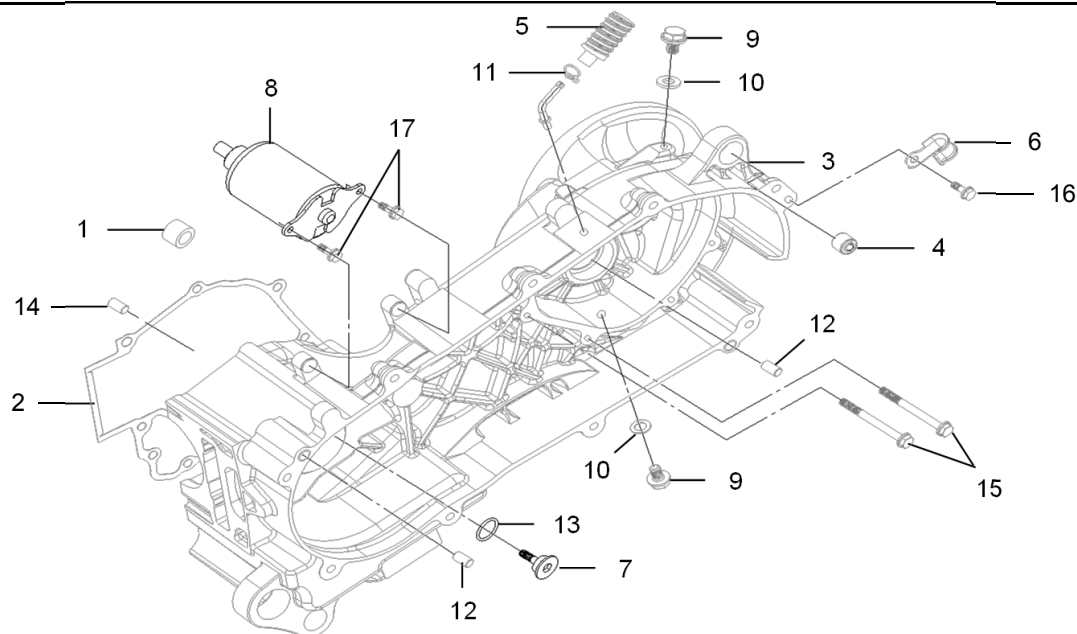
STT No.	Mã số phụ tùng Part No.	Tên phụ tùng Description	UNIT PRICE	Mã		Ghi chú Remark
				VJ7	E/C.	
1	11331-VJ3-0004-SP	R. Crank Case Cover	143.10	1		
2	11394-VJ3-0000	R. Cover Gasket	9.30	1		
3	1236A-H69-0001-VN	Tappet Adjusting Hole Cap Ass'y	10.00	1		
4	15421-M9Q-0001	Oil Filter Screen	8.30	1		
5	15426-M9Q-0000	Oil Filter Screen Spg.	1.60	1		
6	1565A-VJ3-0001	Oil Level Gauge Ass'y.	5.00	1		
7	32961-F6A-0001-L1	A.C.G. Cord Clamp	1.00	1		
8	91302-M9Q-000	O-Ring 30.8mm	1.70	1		
9	91307-M9Q-0000	O-Ring 18x3	1.60	1		
10	94301-08140-00	Dowel Pin 8x14	1.30	2		
11	96001-06030-08	Sh. Flange Bolt 6x30	1.00	2		
12	96001-06095-08	Sh. Flange Bolt 6x95	1.00	6		
13	96001-06100-08	Sh. Flange Bolt 6x100	1.30	2		
14	12361-H69-000	Tappel Adjusting Hole Cap	6.20	1		

L. CRANK CASE  
LỐC MÁY TRÁI

E09

Service Item

Phụ Tùng Cung Cấp

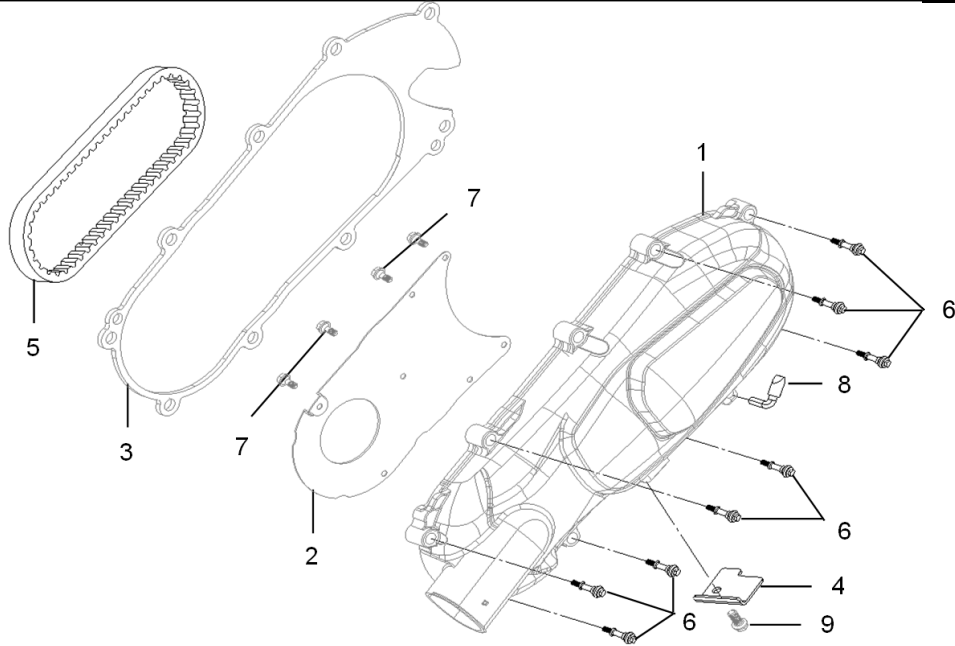


1	11102-M9Q-300
2	11192-VJ3-000
3	11200-VJ3-000
4	11203-M9Q-300
5	11221-VWA-000
6	11383-VJ3-000
7	14531-M9Q-000
8	31200-VJ3-000
9	90103-M9Q-000
10	90474-M9Q-000
11	90601-VWA-000
12	90703-M8Q-000
13	91304-M9Q-000
14	94301-08140
15	95801-06040-08
16	96001-06012-08

STT No.	Mã số phụ tùng Part No.	Tên phụ tùng Description	UNIT PRICE	Mã E/C.		Ghi chú Remark
				VJ7		
1	11102-M9Q-3000	Eng. Hanger Rubber Bush	10.40	1		Không Dùng
2	11192-VJ3-0000	R. Crank Case Gasket	10.30	1		
3	11200-VJ3-0002-SP	L. Crank Case Comp.	329.50	1		
4	11203-M9Q-3000	Rr. Cush. Un. Rubber Bush	5.30	1		
5	11221-VWA-0000	Mission Breather Tube	3.50	1		
6	11383-VJ3-000	Breather Tube Clamper		1		
7	14531-M9Q-000	Cam Chain Tensioner Pivot	5.50	1		
8	31200-VJ3-0001	Start Motor Ass'y	166.40	1		
9	90103-M9Q-0000-L1	Special Bolt 8mm	2.00	2		
10	90474-M9Q-0000	Washer 8mm	0.70	2		
11	90601-VWA-000	Tube Clamp D10.5		1		
12	90703-M8Q-000	Dowel Pin 10*14	1.00	2		
13	91304-M9Q-000	O-Ring 15.2*1.5	2.50	1		
14	94301-08140-00	Dowel Pin 8x14	1.30	2		
15	95801-06040-07	Sh. Flange Bolt 6x40	1.30	2		
16	96001-06012-08	Sh. Flange Bolt 6X12	0.80	1		
17	96001-06016-08	Sh. Flange Bolt 6x16	1.00	2		

LEFT CRANK CASE  
NẮP MÁY TRÁI

E10



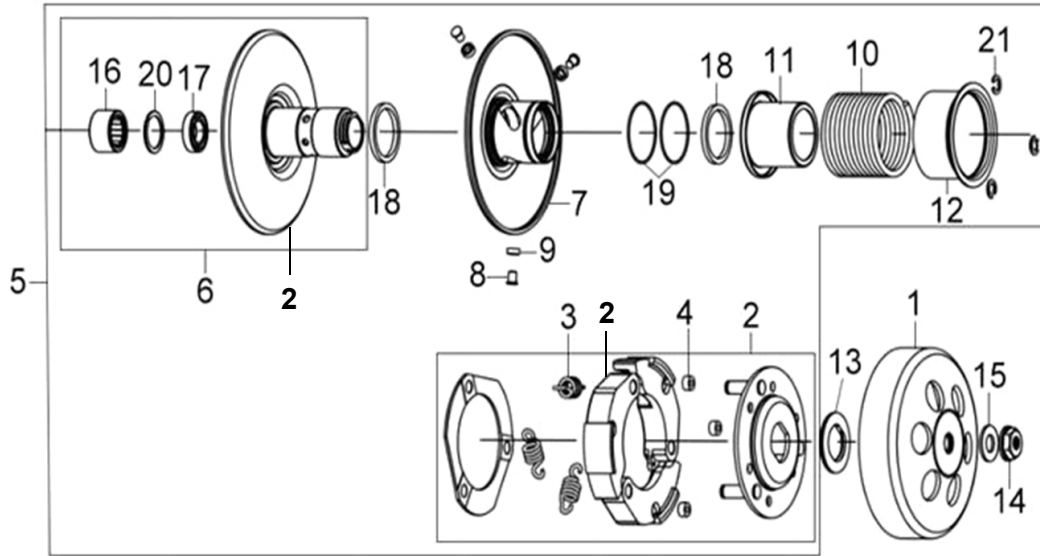
Service Item  
Phụ Tùng Cung Cấp

1	11341-VJ3-000
2	11342-VJ3-000
3	11395-VJ3-000
4	11832-VJ3-000
5	23100-F6A-000
6	9000B-M9Q-000
7	93891-05010-00
8	9500A-VUC-000
9	96001-06012-08

STT No.	Mã số phụ tùng Part No.	Tên phụ tùng Description	UNIT PRICE	Mã		Ghi chú Remark
				VJ7	E/C.	
1	11341-VJ3-0002-IC	L. Crank Case Cover	149.80	1		
2	11342-VJ3-0001	L.Side Cover Plate	10.00	1		
3	11395-VJ3-0001	L. Cover Gasket	20.00	1		
4	11832-VJ3-0001	Left Cover Stay	2.70	1		
5	23100-F6A-0003	Drive Belt	109.90	1		
6	9000B-M9Q-000	Sh. Flange Bolt 6*35	3.10	9		
7	93891-05010-00	Washer Screw 5*10		7		
8	9500A-VUC-000	Drain Tube Ass'y		1		
9	96001-06012-08	Sh. Flange Bolt 6X12	0.80	1		

**DRIVEN FACE  
MÂM TRUYỀN ĐỘNG**

**E11**



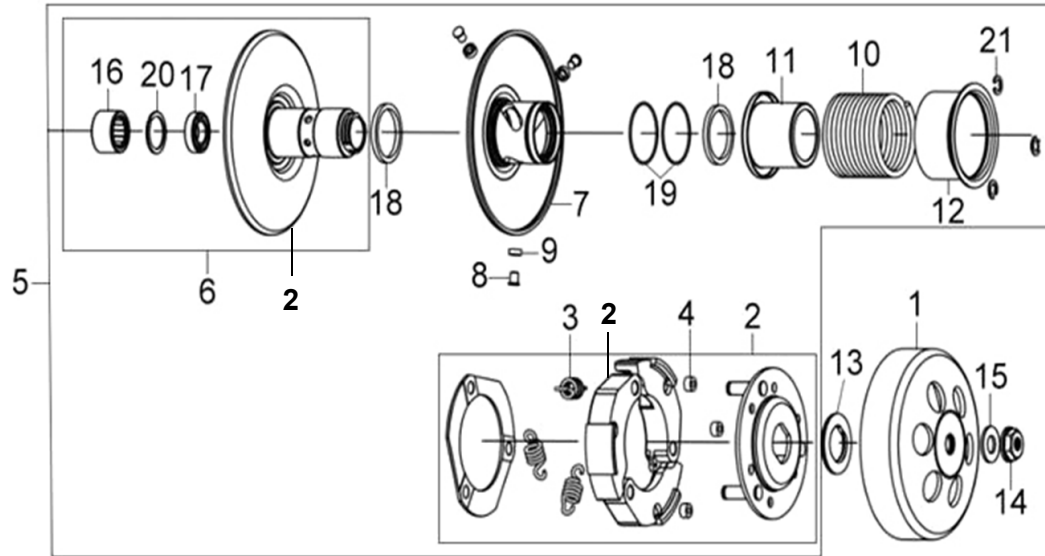
**Service Item  
Phụ Tùng Cung Cấp**

1	22101-M9Q-000
	22101-VJ6-000
2	22300-VJ1-000
3	22401-VT3-000
4	22804-VS1-000
5	23010-VJ3-000
10	23233-M9Q-000
13	90202-M9Q-000
14	94050-12000
15	90440-M9Q-000
16	91001-H01-300
17	91002-H6B-300
20	94520-28000
21	94540-07010
23	22530-VUC-000

STT No.	Mã số phụ tùng Part No.	Tên phụ tùng Description	UNIT PRICE	Mã E/C.		Ghi chú Remark
				VJ7		
1	22101-M9Q-0000	Clutch Outer	59.90	1		
2	22300-VJ1-000	Drive Plate Ass'y.		1		
3	22401-VT3-000	Clutch Spring		3		
4	22804-VS1-000	Clutch Damper Rubber		3		
5	23010-VJ3-0002	Driven Pulley Ass'y.	332.90	1		
6	23200-VJ3-000	Driven Face Ass'y.		1		
7	23220-VS3-000	Movable Driven Face Comp.		1		
8	23225-M9Q-000	Roller Guide Pin	1.30	3		
9	23226-M9Q-000	Guide Roller	1.30	3		
10	23233-M9Q-000	Driven Face Spring	11.10	1		
11	23237-M9Q-000	Seal Collar	6.50	1		
12	23238-HEB-010	Spring Collar		1		
13	90202-M9Q-000	Special Nut 28mm	3.30	1		
14	94050-12000-L1	Flange Nut 12mm	1.60	1		
15	90440-M9Q-0000	Plain Washer 12mm	1.00	1		
16	91001-H01-300	Needle Bearing 20x29x18		1		

**DRIVEN FACE  
MÂM TRUYỀN ĐỘNG**

**E11**

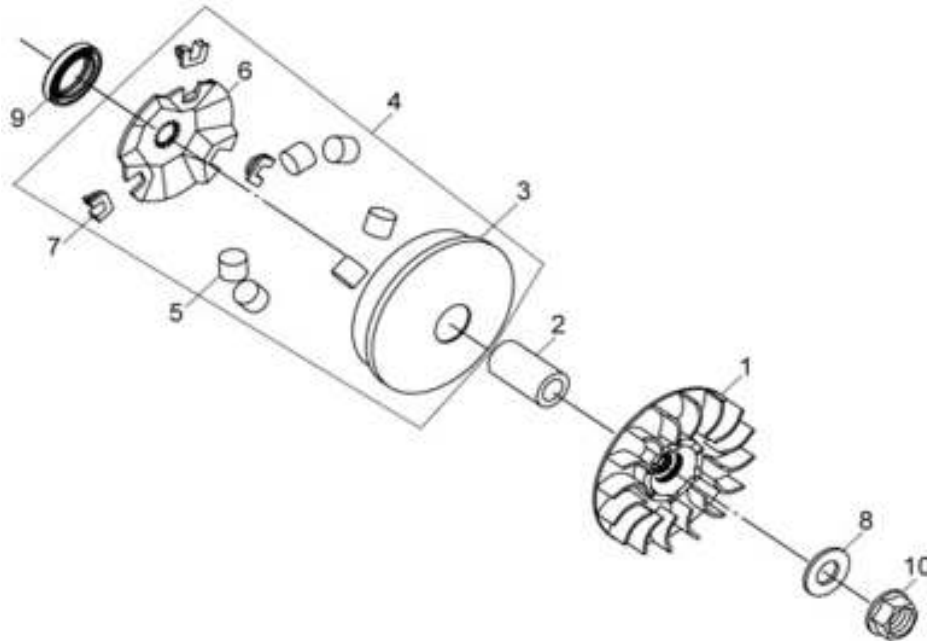


**Service Item  
Phụ Tùng Cung Cấp**

STT No.	Mã số phụ tùng Part No.	Tên phụ tùng Description	UNIT PRICE	Mã		Ghi chú Remark
				VJ7	E/C.	
17	91002-H6B-300	Rad. Ball Brg. 6902LUC3	22.50	1		
18	91211-M8Q-000	Driven Face Seal 34*41*4	10.90	1		
19	91384-M9Q-000	O-Ring 38.8*1.9	2.50	2		
20	94520-28000	Cir-clip 28mm	1.70	1		
21	94540-07010	E-ring 7mm	1.30	3		
22	23210-VS1-000	Driven Face Comp.		1		
	23210-HKE-000	Driven Face Comp.				
23	22530-VUC-000	Clutch Weight		3		

**DRIVE FACE  
MÂM DẪN ĐỘNG**

**E12**



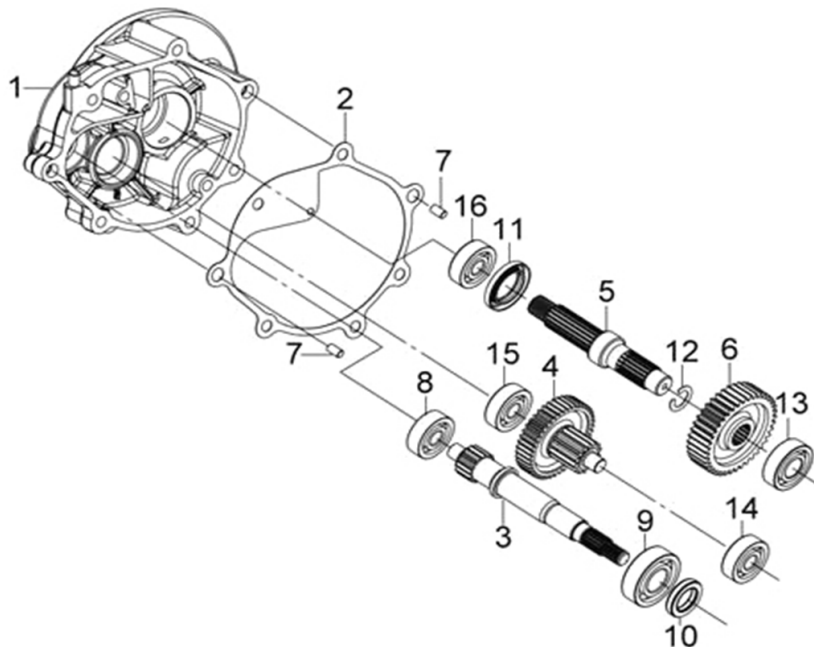
**Service Item  
Phụ Tùng Cung Cấp**

1	22102-VT1-000
	22102-VJ6-000
2	22105-M92-000
3	22110-VT1-000
4	2211A-VJ3-000
5	22121-KAA-000
6	22131-VT2-000
7	22132-VT2-000
8	90440-M9Q-000
9	91202-FFA-900
10	94050-12000

STT No.	Mã số phụ tùng Part No.	Tên phụ tùng Description	UNIT PRICE	Mã E/C.		Ghi chú Remark
				VJ7	E/C.	
1	22102-VT1-0001	Drive Face Comp.	59.90	1		
2	22105-M92-0000	Drive Face Boss	14.90	1		
3	22110-VT1-000	Movable Drive Face Comp.		1		
4	2211A-VJ3-000	Movable Drive Face Assy.		1		
5	22121-KAA-000	Weight Roller Comp.	3.90	6		
6	22131-VT2-0000	Ramp Plate	18.00	1		
7	22132-VT2-0000	Slide Piece	1.60	3		
8	90440-M9Q-0000	Plain Washer 12mm	1.00	1		
9	91202-FFA-9000	Oil Seal 27*47*7	14.90	1		
10	94050-12000-L1	Flange Nut 12 mm	1.60	1		

**TRANSMISSION**  
**CƠ CẤU TRUYỀN ĐỘNG**

**E13**



**Service Item**  
**Phụ Tùng Cung Cấp**

1	21200-VJ3-000
2	21395-VJ3-000
3	23411-VJ3-000
4	23420-VJ3-000
5	23431-VJ3-000
6	23432-VJ3-000
8	91003-KS4-003
9	91104-H01-300
10	91202-H01-000
11	91255-M9Q-300
12	94510-20000
13	96100-62033-10
14	96100-63013-00
15	96100-63013-00
16	96150-60043-10

STT No.	Mã số phụ tùng Part No.	Tên phụ tùng Description	UNIT PRICE		Mã E/C.	Ghi chú Remark
				VJ7		
1	21200-VJ3-0001-SP	Mission Case Comp.	83.20	1		
2	21395-VJ3-0001	Mission Case Gasket	7.30	1		
3	23411-VJ3-0001	Drive Shaft	99.90	1		
4	23420-VJ3-000	Counter Shaft Comp.		1		
5	23431-VJ3-0000	Final Shaft	53.30	1		
6	23432-VJ3-0000	Final Gear	59.90	1		
7	90703-M8Q-000	Dowel Pin 10x14	1.00	2		
8	91003-KS4-0030-M2	Radial Ball Brg. CSB301	16.50	1		
9	91104-H01-300	Radial Ball Bearing. CSB204		1		
10	91202-H01-000	Oil Seal 20*32*6		1		
11	91255-M9Q-3000	Oil Seal 27*42*7	4.70	1		
12	94510-20000	Ex. Circle Clip 20mm	1.00	1		
13	96100-62033-10-VN	Radial Ball Bearing 6203	8.70	1		
14	96100-63013-00	Radial Ball Bearing 6301	12.30	1		
15	96100-63013-00	Radial Ball Bearing 6301	12.30	1		
16	96150-60043-10	Radial Ball Bearing 6004	24.00	1		

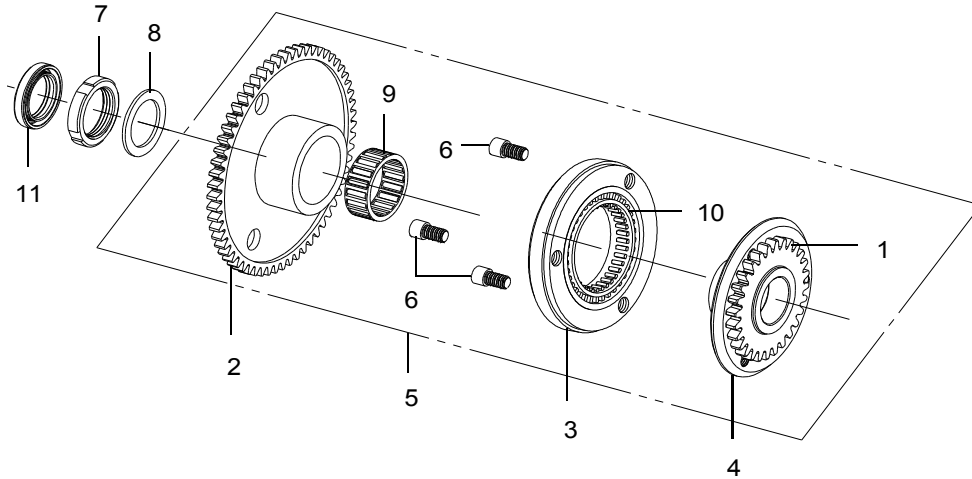


**STARTING CLUTCH A'SSY**  
BỘ LY HỢP ĐỀ

**E14**

Service Item

Phụ Tùng Cung Cấp



1	15131-M92-300
2	28110-VVC-000 28110-VJ6-000
3	28123-VUA-010
4	28124-VVC-010
5	2812E-VTB-000 2812E-VJ6-000
6	90002-VUA-010
7	90201-VTB-000
8	90403-M92-000
9	91104-M9Q-000
10	91105-VUA-010
12	91201-M9B-300

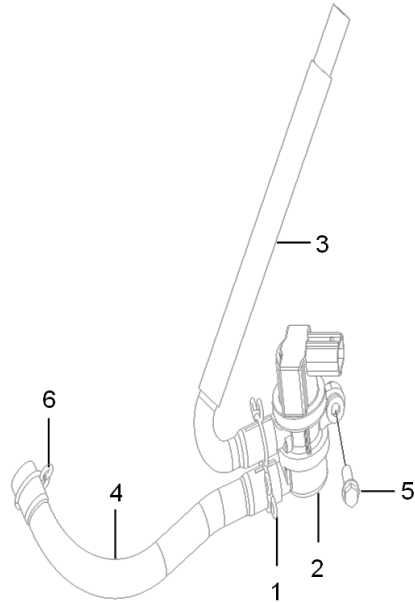
STT No.	Mã số phụ tùng Part No.	Tên phụ tùng Description	UNIT PRICE	Mã E/C.		Ghi chú Remark
				VJ7		
1	15131-M92-3002	Oil Pump Drive Gear	16.60	1		
2	28110-VVC-0004-M1	Starting Clutch Gear Comp.	49.30	1		
3	28123-VUA-010	Outer Ring		1		
4	28124-VVC-010	Starting Clutch Flange		1		
5	2812B-VTB-0002-VN	Starting Clutch Comp Set	183.10	1		
6	90002-VUA-010	Socket Bolt 6x10		3		
7	90201-VTB-000	Lock Nut 22 mm		1		
8	90403-M92-0000	Thrust Washer 22.2x31x1.5	1.30	1		
9	91104-M9Q-000	Needle Brearing 28x32x17	20.60	1		
10	91105-VUA-010	Inner Race Assy		1		
12	91201-M9B-3000	Oil Seal 19.8x30x5	4.90	1		

**A. I. S. V. A'SSY**  
**BỘ XỬ LÝ KHÍ THẢI**

**E15**

**Service Item**  
**Phụ Tùng Cung Cấp**

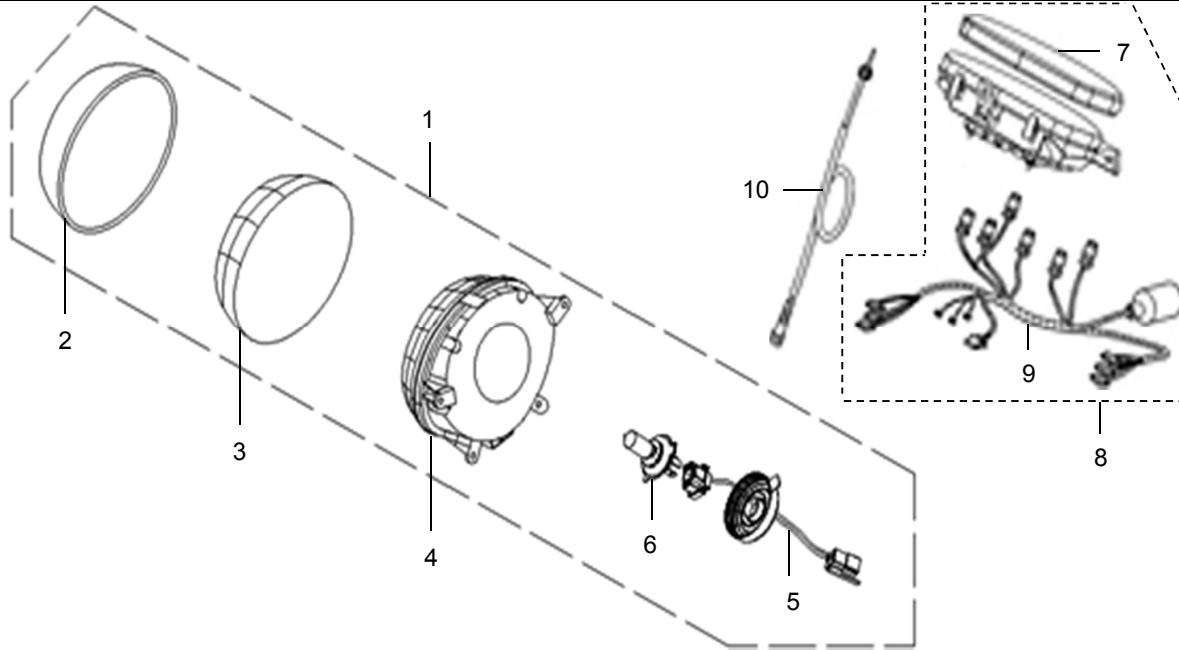
- |   |                |
|---|----------------|
| 1 | 18533-M7Q-000  |
| 2 | 18650-F6K-000  |
| 3 | 18656-VJ3-000  |
| 4 | 18657-VJ3-000  |
| 5 | 93401-05020-0H |
| 6 | 95002-80000    |



STT No.	Mã số phụ tùng Part No.	Tên phụ tùng Description	UNIT PRICE	VJ7	Mã E/C.	Ghi chú Remark
1	18533-M7Q-0000-L1	Air Hose Clip 19	1.60	2		
2	18650-F6K-0001	A.I.S.V. Assy.	109.90	1		
3	18656-VJ3-000	A.I.S.V./R.V. Joint Tube		1		
4	18657-VJ3-000	A.I.S.V.-Air./C Joint Tube		1		
5	93401-05020-0H-L1	Hex. Bolt 5*20mm	0.30	1		
6	95002-80000	Tube Clip C12	1.00	1		

**HEAD LIGHT-SPEEDOMETER**  
**ĐÈN TRƯỚC-ĐỒNG HỒ TỐC ĐỘ**

**F01**



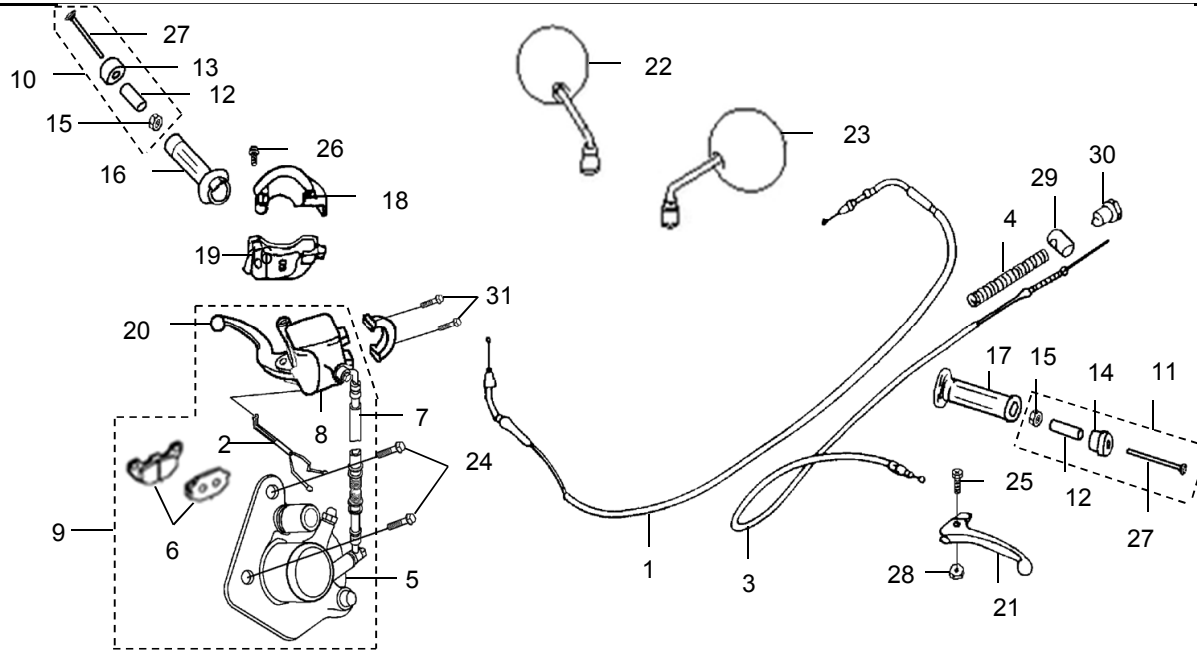
**Service Item**  
**Phụ Tùng Cung Cấp**

1	33100-VJ3-000
2	33101-VJ3-000
3	33102-VJ3-000
4	33106-VJ3-000
5	33120-VJ3-000
6	34901-VBC-000
7	37119-VJ3-000
8	37200-VJ4-000
	37200-VJ6-000
9	37224-VJ4-000
	37224-VJ6-000
10	44830-VJ3-000

STT No.	Mã số phụ tùng Part No.	Tên phụ tùng Description	UNIT PRICE	VJ7	Mã E/C.	Ghi chú Remark
1	33100-VJ3-0001	Head Light Ass'y	149.70	1		
2	33101-VJ3-0000	Head Light Rim	40.00	1		
3	33102-VJ3-000	Head Light Lens		1		
4	33106-VJ3-000	Head Light Base		1		
5	33120-VJ3-000	Head Light Socket Comp.		1		
6	34901-VBC-000	Head Light Bulb		1		
7	37119-VJ3-000	Meter Upper Case		1		
8	37200-VJ4-0005	Speedometer Ass'y	549.20	1		
9	37224-VJ4-000	Meter Cord Comp		1		
10	44830-VJ3-0000	Speedometer Cable Comp.	14.90	1		

**CABLE-HANDLE LEVER**  
**DÂY CẤP-TAY THẮNG**

**F02**



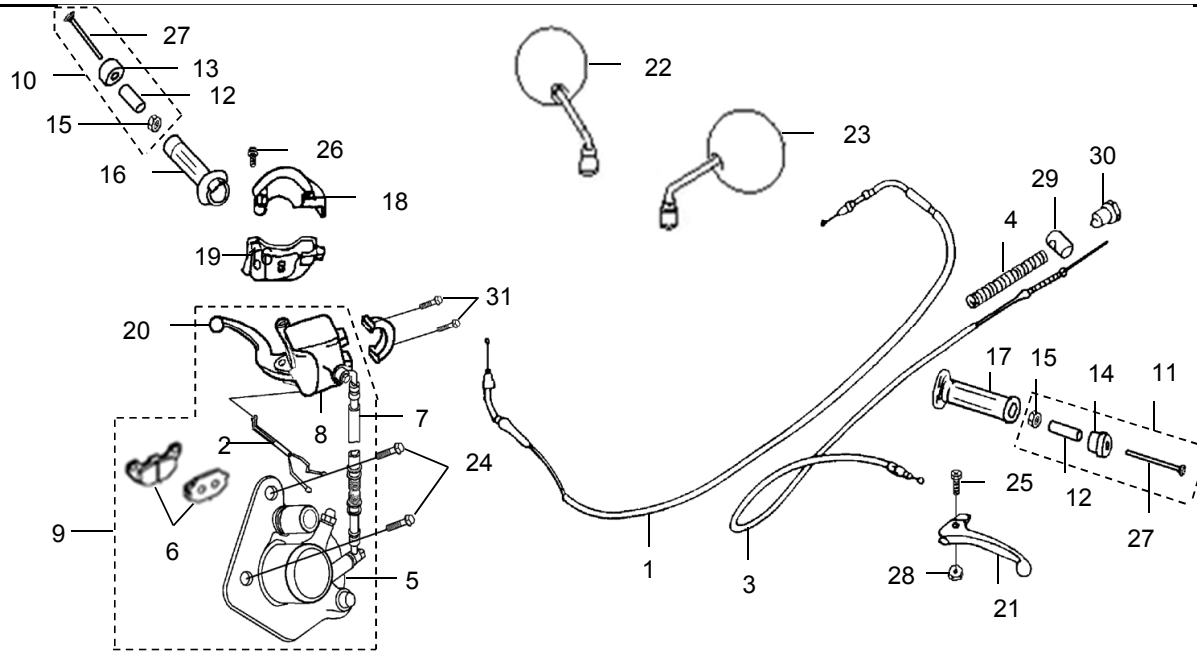
**Service Item**  
**Phụ Tùng Cung cấp**

1	17910-VJ3-000
2	35340-A5Z-000
3	43450-VJ3-000
4	43472-VUA-000
5	45100-VT5-000
6	45105-VTB-000
7	45126-VJ4-000
8	45500-M9P-000
9	45500-VT3-000
9	4550A-VJ4-000
9	4550A-VJ6-000
10	53102-VT5-000
11	53103-VT5-000
12	53104-M3B-000
13	53105-VT5-000
13	53105-H6T-000

STT No.	Mã số phụ tùng Part No.	Tên phụ tùng Description	UNIT PRICE			E/C.	Remark
				VJ7			
1	17910-VJ3-0001	Throttle Cable Comp.	26.70	1			
2	35340-A5Z-0000	Fr. Stop Switch Ass'y	16.70	1			
3	43450-VJ3-0002	Rr. Brake Cable Comp.	26.70	1			
4	43472-T5C-0000	Rr. Brake Return Spring	1.60	1			
5	45100-VT5-000	Fr. Caliper Ass'y		1			
6	45105-VTB-000	Pad Comp. A +B		1			
7	45126-VJ4-0000	Fr. Brake Hose Comp	89.90	1			
8	45500-M9P-000	R. Strg. Hndl. Lever		1			
9	4550A-VJ4-0000	Fr. Brake Ass'y	532.60	1			
10	53102-VT5-000	R. Handle Pipe Weigth Ass'y		1			
11	53103-VT5-000	L. Handle Pipe Weigth Ass'y		1			
12	53104-M3B-0003	Handle Weigth Rubber	1.00	2			
13	53105-VT5-0004-T1	R. Handle Pipe Weigth	6.70	1			
14	53106-VT5-0002-T1	L. Handle Pipe Weigth	5.60	1			
15	53108-N02-0001	Special Nut 6 mm	1.00	2			

**CABLE-HANDLE LEVER**  
**DÂY CÁP-TAY THĂNG**

**F02**



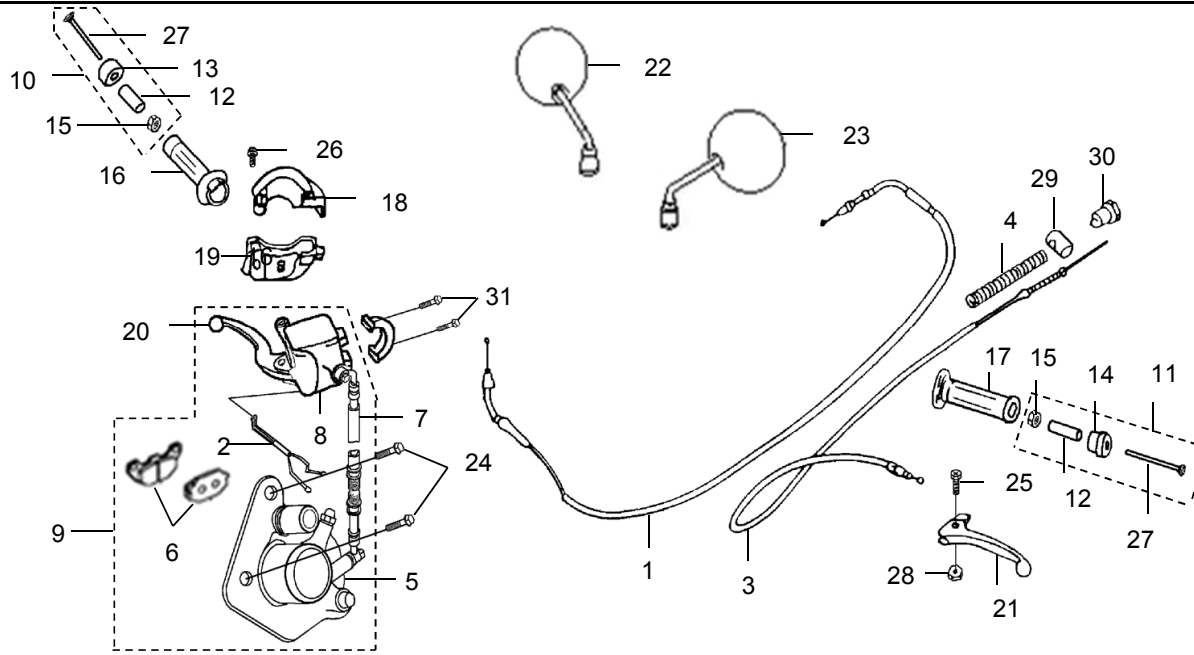
**Service Item**  
**Phụ Tùng Cung cấp**

14	53106-VT5-000
	53106-H6T-000
15	53108-N02-000
16	53140-VT5-000
	53140-VWD-000
17	53166-VT5-000
	53166-VWD-000
18	53167-H09-900
19	53168-H09-000
20	53176-M9P-000
21	53178-VT1-000
	53178-VT3-000
22	88110-VJ3-000
23	88120-VJ3-000
24	90106-H21-900
25	90115-M9Q-000

STT No.	Mã số phụ tùng Part No.	Tên phụ tùng Description	UNIT PRICE	Mã		Ghi chú Remark
				E/C.	VJ7	
16	53140-VT5-0000	R. Handle Grip Comp.	5.00		1	
17	53166-VT5-0000	L. Handle Grip	5.00		1	
18	53167-H09-0001	Throt. Under Housing	3.70		1	
19	53168-H09-0001	Throt. Upper Housing	3.70		1	
20	53176-M9P-0000	R. Steering Handle Lever	19.50		1	
21	53178-H5K-0001	L. Steering Handle Lever	19.70		1	
22	88110-VJ3-0001	R. Back Mirror Ass'y	103.20		1	
23	88120-VJ3-0001	L. Back Mirror Ass'y	103.20		1	
24	90106-H21-9000	Flange Bolt 8x35	1.40		2	
25	90115-M9Q-0000	Handle Lever Pivot Screw	0.60		1	
26	93500-05022-00	Pan Screw 5x22	0.40		2	
27	93700-06060-0G	Oval Screw 6x60	0.90		2	
28	94001-05070-0S	Hex Nut 5 mm	1.00		1	
29	95015-32001	Brake Arm Joint B	1.00		1	
30	95015-42000-00	Adjust Nut B	2.10		1	

**CABLE-HANDLE LEVER**  
**DÂY CÁP-TAY THĂNG**

**F02**



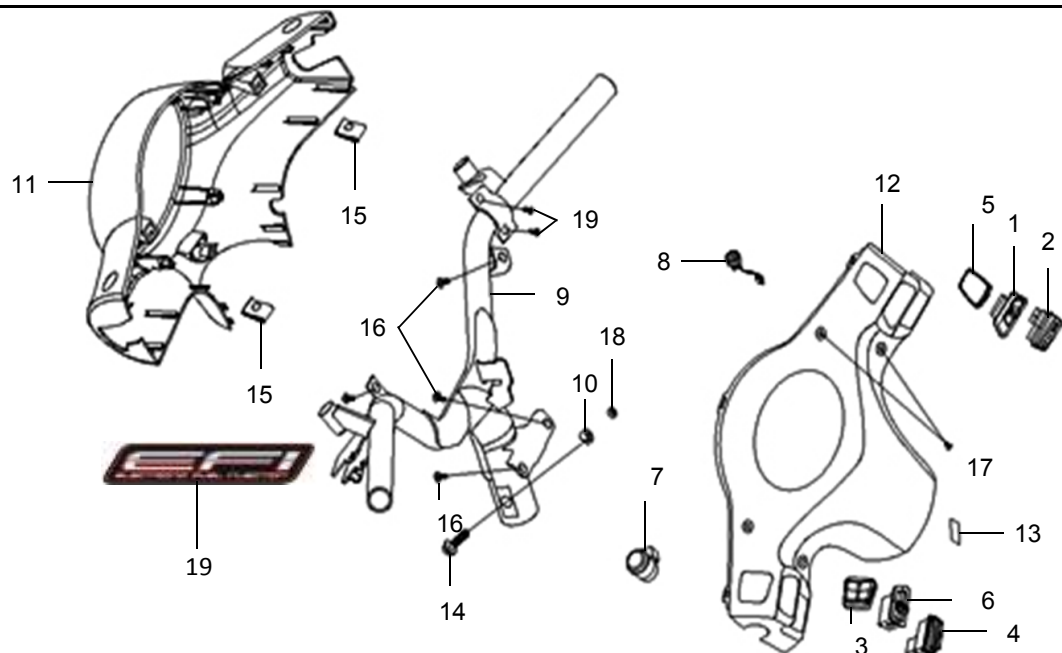
**Service Item**  
**Phụ Tùng Cung cấp**

26	93500-05022-0A
27	93700-06060-0G
28	94001-05070-0S
29	95015-32001
30	95015-42000
31	96700-06012-08

STT No.	Mã số phụ tùng Part No.	Tên phụ tùng Description	UNIT PRICE	VJ7	Mã E/C.	Ghi chú Remark
31	96700-06012-08-L1	Socket Bolt 6x12	0.70	2		

**STEERING HANDLE-HANDLE**  
**TAY LÁI-NÁP TAY LÁI**

**F03**



**Service Item**

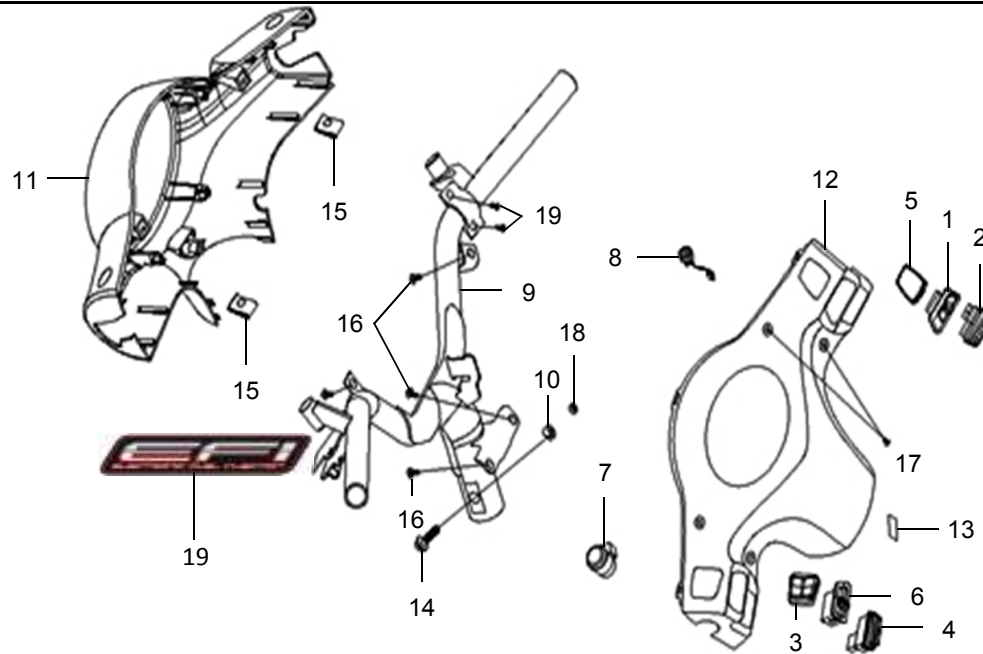
**Phụ Tùng Cung cấp**

1	35150-A39-000
2	35160-VS1-000
3	35170-A45-900
4	35180-VS1-000
5	35190-VT5-000
6	35200-M9Q-000
7	38300-X01-300
8	38400-VT1-000
9	53100-VJ3-000 53100-VJ3-900
10	53125-M9Q-000
11	53205-VJ3-000
12	53206-VJ3-000
13	87560-VTK-000
14	90106-VT3-000
15	90302-SA4-010

STT No.	Mã số phụ tùng Part No.	Tên phụ tùng Description	UNIT PRICE	Mã E/C.		Ghi chú Remark
				VJ7	E/C.	
1	35150-A39-0002-L1	Light Switch Unit	10.70	1		
2	35160-VS1-0000-L1	Start Switch Unit	8.30	1		
3	35170-A45-9000	Dimmer & Passing Sw. Unit	20.70	1		
4	35180-VT5-0000	Horn Switch Unit	10.00	1		
5	35190-VT5-0000	Seat Open Swich	14.80	1		
6	35200-M9Q-0001	Winker Switch Unit	8.20	1		
7	38300-X01-3001	Winker Relay Ass'y	0.00	1		
8	38400-VT1-0000	Elec. Buzzer Ass'y	14.90	1		
9	53100-VJ3-0006	Steering Handle Comp.	73.20	1		
10	53125-M9Q-0000	Handle Setting Collar	10.50	1		
11	53205-VJ3-0001-IL	Fr. Handle Cover	62.10	1		IL-GREY, RT-RED, WB-WHITE
12	53206-VJ3-0001-IL	Rr. Handle Cover	52.70	1		IL-GREY, RT-RED, WB-WHITE
13	87560-VT5-0000	Drive Caution Mark	0.70	1		
14	90106-VT3-000	Flange Bolt 10x50		1		
15	90302-SA4-003B	Spring Nut 4 mm	0.70	2		

**STEERING HANDLE-HANDLE**  
**TAY LÁI-NÁP TAY LÁI**

**F03**



**Service Item**  
**Phụ Tùng Cung cấp**

16	93903-35280
17	93903-44480
18	94050-10070
19	96700-06012-08

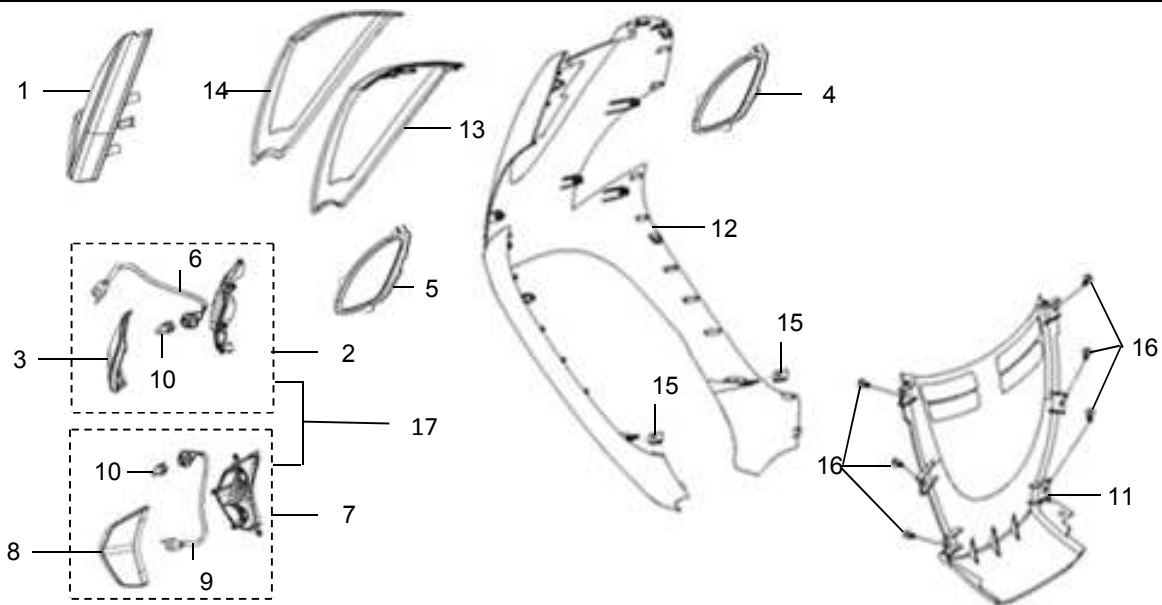
STT No.	Mã số phụ tùng Part No.	Tên phụ tùng Description	UNIT PRICE	Mã E/C.		Ghi chú Remark
				VJ7		
16	93903-35280-00	Tapping Screw 5x12	0.50	4		
17	93903-44480	Tapping Screw 4x16	0.60	4		
18	94050-10070	Flange Nut 10 mm	1.30	1		
19	96700-06012-08-L1	Socket Bolt 6x12	0.70	2		
20	87148-VWA-0001	EFI Emblem	10.00	1		



FRONT COVER - TOP COVER

NẮP TRƯỚC - MẶT NẠ

F04



Service Item  
Phụ Tùng Cung cấp

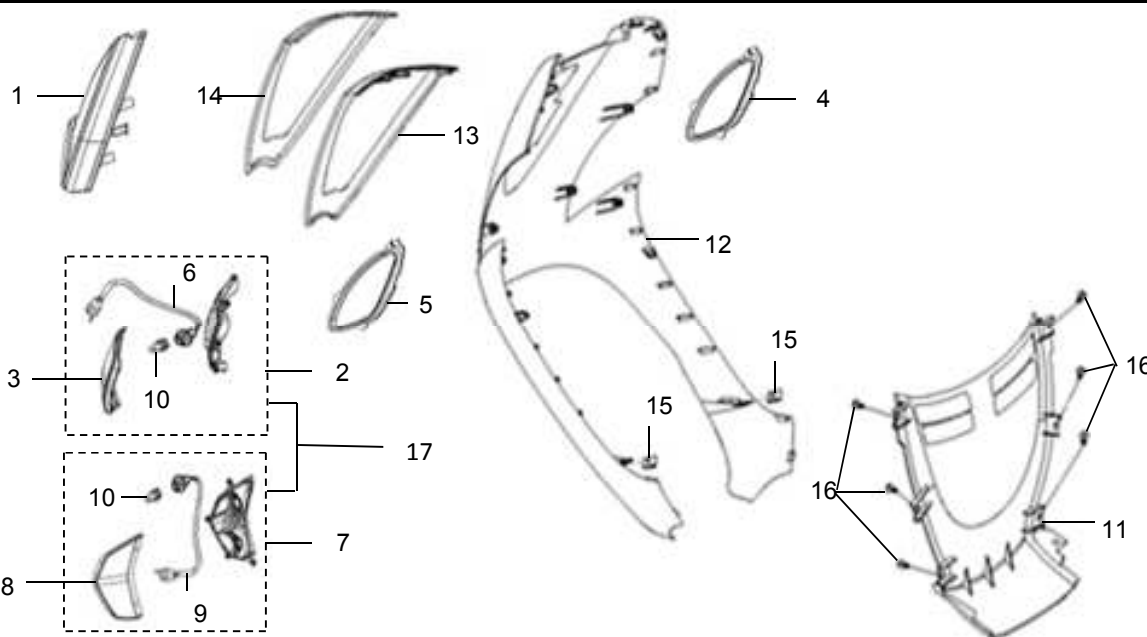
1	33140-VJ3-000
	33140-VJ6-000
	33140-VJ7-000
2	33400-VJ3-000
3	33402-VJ3-000
4	33406-VJ3-000
5	33407-VJ3-000
6	33418-VJ3-000
7	33450-VJ3-000
8	33462-VJ3-000
9	33468-VJ3-000
10	34905-VS1-000
11	64300-VJ3-000
12	64301-VJ3-000
13	64302-VJ3-000
	64302-VJ6-000

STT No.	Mã số phụ tùng Part No.	Tên phụ tùng Description	UNIT PRICE	Mã E/C.		Ghi chú Remark
				VJ7		
1	33140-VJ7-0000	Fr. Position Lamp Ass'y	182.90	1		
2	33400-VJ3-000	R. Fr. Winker Ass'y		1		
3	33402-VJ3-000	R. Fr. Winker Lens		1		
4	33406-VJ3-0000	Fr R Winker Garnish	31.60	1		
5	33407-VJ3-0000	Fr L Winker Garnish	31.60	1		
6	33418-VJ3-000	Fr. R. Cord Comp		1		
7	33450-VJ3-000	L. Fr. Winker Ass'y		1		
8	33462-VJ3-000	L Fr. Winker Lens		1		
9	33468-VJ3-000	Fr. L. Cord Comp		1		
10	34905-VS1-000	Winker Bulb (12V/10W)		2		
11	64300-VJ3-0000-IL	Fr. Under Spoiler	46.60	1		IL-GREY, RT-RED, WB-WHITE
12	64301-VJ3-0001-IL	Fr. Cover	118.00	1		IL-GREY, RT-RED, WB-WHITE
13	64302-VJ3-0002-T0	Fr. Top Cover	10.00	1		

FRONT COVER - TOP COVER

NẮP TRƯỚC - MẶT NẠ

F04



Service Item

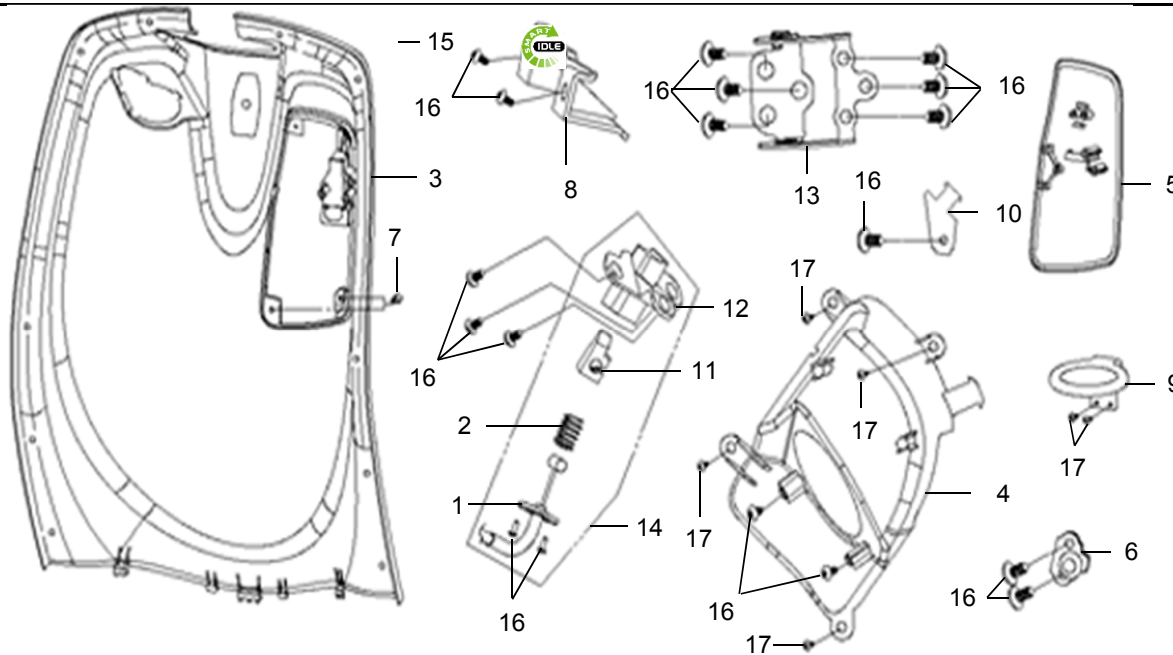
Phụ Tùng Cung cấp

14	64303-VJ3-000
15	90302-SA4-010
16	93903-34320
17	3340A-VJ3-000

STT No.	Mã số phụ tùng Part No.	Tên phụ tùng Description	UNIT PRICE	VJ7	Mã E/C.	Ghi chú Remark
14	64303-VJ3-0002	Fr. Top Cover Cover Emblem	53.20	1		
15	90302-SA4-003B	Spring Nut 4 mm	0.70	2		
16	93903-34320-00	Tapping Screw 4X12	0.60	6		
17	3340A-VJ3-0000	Fr. Winker Ass'y	113.20	1		

**INNER BOX  
CÓP TRƯỚC**

**F05**



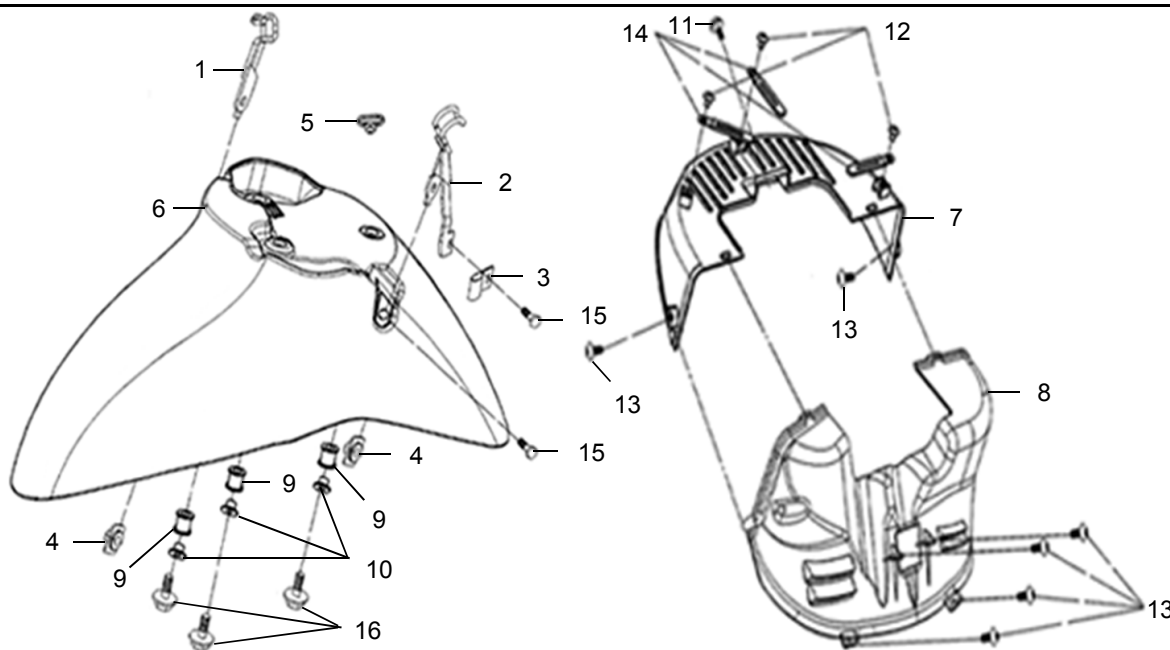
**Service Item  
Phụ Tùng Cung cấp**

3	64304-VJ3-000
4	64305-VJ3-000
5	64308-VJ3-000
6	64309-VUA-000
7	64312-VUA-000
8	64314-VJ3-000
9	64330-VUA-000
13	8114A-VJ3-000
14	8114B-VJ3-000
15	87147-VUH-000
16	93903-34320
17	93903-34380

STT No.	Mã số phụ tùng Part No.	Tên phụ tùng Description	UNIT PRICE	Mã E/C.		Ghi chú Remark
				VJ7		
1	17312-VJ3-000	Fuel Cap Lock Cable		1		
2	17667-VUA-000	Return Spring		1		
3	64304-VJ3-0003-IL	Inner Cover	93.10	1		IL-GREY, RT-RED, WB-WHITE
4	64305-VJ3-0002	Filler Cover	11.60	1		
5	64308-VJ3-0003-IL	Fuel Cap Cover	27.90	1		IL-GREY, RT-RED, WB-WHITE
6	64309-VUA-0003	Fuel Cap Hook Comp	6.70	1		
7	64312-VUA-0001	Fuel Cap Stoper Rubber	0.70	4		
8	64314-VJ3-0000-IL	Inner Cover Joint Cap	9.30	1		IL-GREY, RT-RED, WB-WHITE
9	64330-VUA-0002	Fuel Filler Cap Holder	5.00	1		
10	64341-VUA-000	Electric Buzzer Stay		1		
11	81146-VWA-000	Fuel Cap Catch Slide		1		
12	81147-VUA-000	Fuel Cap Lock Case		1		
13	8114A-VJ3-0003	Fuel Cap Hinge Ass'y	26.70	1		
14	8114B-VJ3-0000	Fuel Cap Lock Ass'y	26.70	1		
15	87147-VUH-0000	Smart Idle Stripe	1.00	1		
16	93903-34320-00	Tapping Screw 4X12	0.60	16		
17	93903-34280	Tapping Screw 4X12	0.80	8		

**FRONT FENDER-FRONT INNER FENDER**  
**VỀ TRƯỚC-LÓT VỀ TRƯỚC**

**F06**



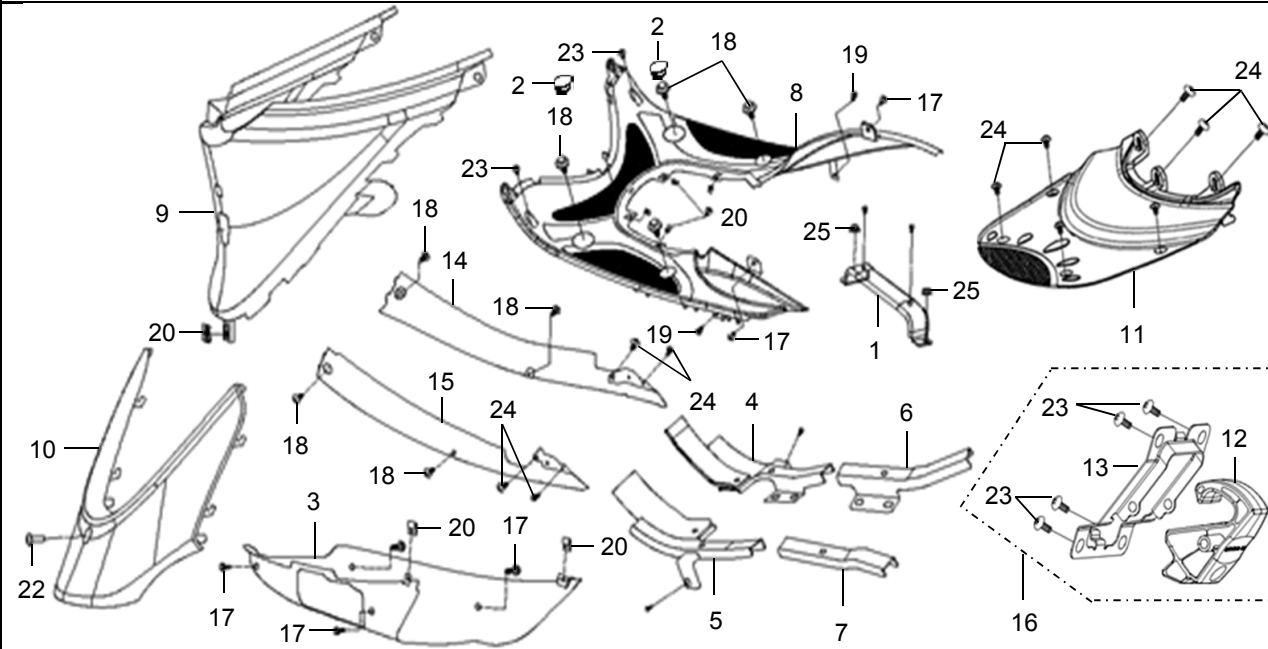
**Service Item**  
**Phụ Tùng Cung cấp**

1	44831-VUA-000
2	45156-VUA-000
3	45157-VA1-000
4	45158-VJ3-000
5	45451-N02-000
6	61100-VJ3-000
	61100-VJ3-000
7	61101-VJ3-000
8	61102-VJ3-000
9	61104-VVC-000
10	61201-M3G-000
11	90111-M9Q-800
13	93903-34380
14	94591-21000
15	96001-06012-07
16	96001-06020-07

STT No.	Mã số phụ tùng Part No.	Tên phụ tùng Description	UNIT PRICE	Mã E/C.		Ghi chú Remark
					VJ7	
1	44831-VUA-0003	Speedometer Cable Guide	2.00		1	IL-GREY, RT-RED, WB-WHITE
2	45156-VUA-0005	Brake Hose Clamper	5.30		1	
3	45157-VA1-0001	Brake Hose Clamper B	2.90		1	
4	45158-VJ3-0000	Brake Cable Holder	1.70		2	
5	45451-N02-0000	Wire Grommet	1.50		1	
6	61100-VJ3-0002-IL	Fr. Fender	62.10		1	
7	61101-VJ3-0002	Fr. Inner Fender A	20.00		1	
8	61102-VJ3-0004	Fr. Inner Fender B	23.30		1	
9	61104-VVC-0000	Fr. Fender Rubber	1.60		3	
10	61201-M3G-0001	Fr. Fender Collar	1.60		3	
11	90111-M9Q-8000-L1	Flange Bolt 6mm	0.70		1	
12	93903-24220-10	Tapping Screw 4*10	0.60		3	
13	93903-34280	Tapping Screw 4*12	0.80		6	
14	94591-21000	Clip 2*100	1.70		3	
15	96001-06012-07	Sh. Flange Bolt 6*12	0.30		2	
16	96001-06020-08-L1	Sh. Flange Bolt Bolt 6X20	0.30		3	

**FLOOR PANEL-CENTER COVER**  
**TẤM SÀN-ÓP GIỮA**

**F07**



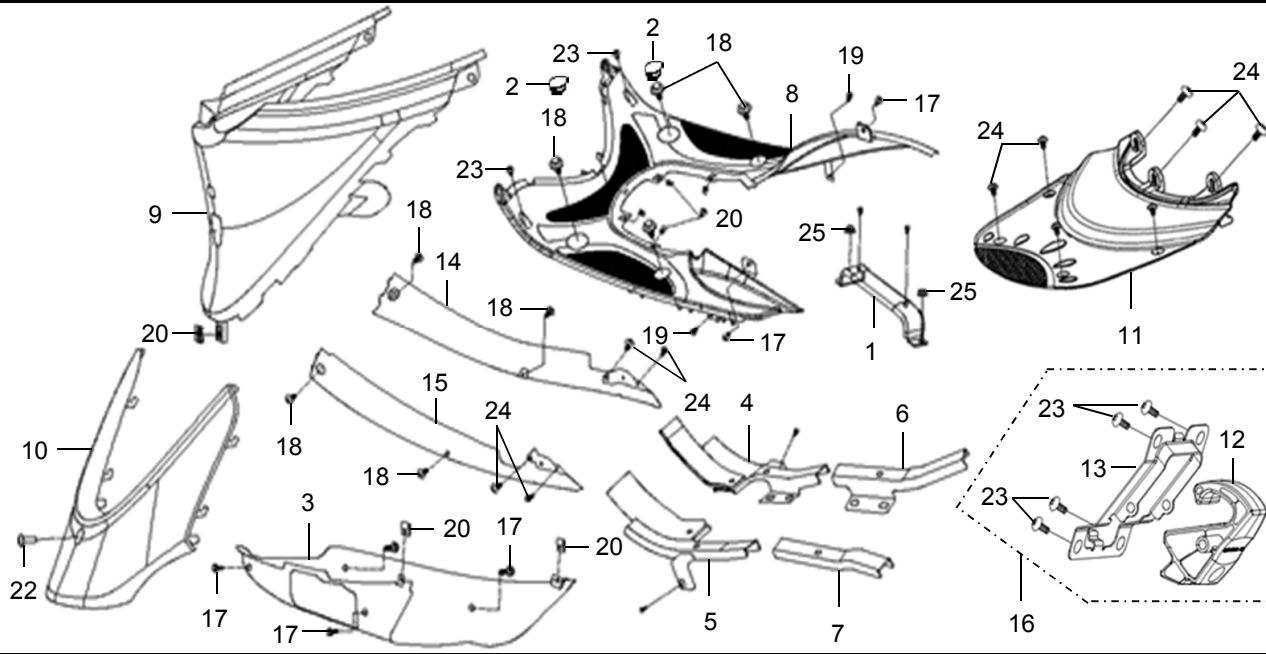
**Service Item**  
**Phụ Tùng Cung cấp**

- |    |               |
|----|---------------|
| 1  | 50141-VJ3-000 |
|    | 50141-VJ3-900 |
| 2  | 50612-VJ4-000 |
| 3  | 50613-VJ3-000 |
| 4  | 50620-VJ3-300 |
|    | 50620-VJ6-300 |
| 5  | 50621-VJ3-300 |
|    | 50621-VJ6-300 |
| 6  | 50625-VJ3-300 |
| 7  | 50626-VJ3-300 |
| 8  | 64310-VJ3-000 |
| 9  | 80152-VJ3-000 |
| 10 | 80153-VJ3-000 |
| 11 | 80154-VJ3-000 |
| 12 | 81132-VJ3-000 |
| 13 | 81148-VJ3-000 |

STT No.	Mã số phụ tùng Part No.	Tên phụ tùng Description	UNIT PRICE	Mã E/C.		Ghi chú Remark
				VJ7		
1	50141-VJ3-0002	Floor Panel Plate	9.00	1		
2	50612-VJ4-0001-T0	Floor Step Cap A	1.30	4		
3	50613-VJ3-0002	Under Cover	33.30	1		
4	50620-VJ3-300	R. Rnfct. Floor Comp A		1		
5	50621-VJ3-300	L. Rnfct. Floor Comp A		1		
6	50625-VJ3-300	R. Rnfct. Floor Comp B		1		
7	50626-VJ3-300	L. Rnfct. Floor Comp B		1		
8	64310-VJ3-0003-NC	Floor Panel	46.60	1		
9	80152-VJ3-0002-IL	Center Cover A	40.40	1		IL-GREY, RT-RED, WB-WHITE
10	80153-VJ3-0002-IL	Center Cover B	21.70	1		IL-GREY, RT-RED, WB-WHITE
11	80154-VJ3-0005-T1	Center Cover C	16.70	1		
12	81132-VJ3-0001	Luggage Hook A	4.00	1		

**FLOOR PANEL-CENTER COVER**  
**TẤM SÀN-ÓP GIỮA**

**F07**



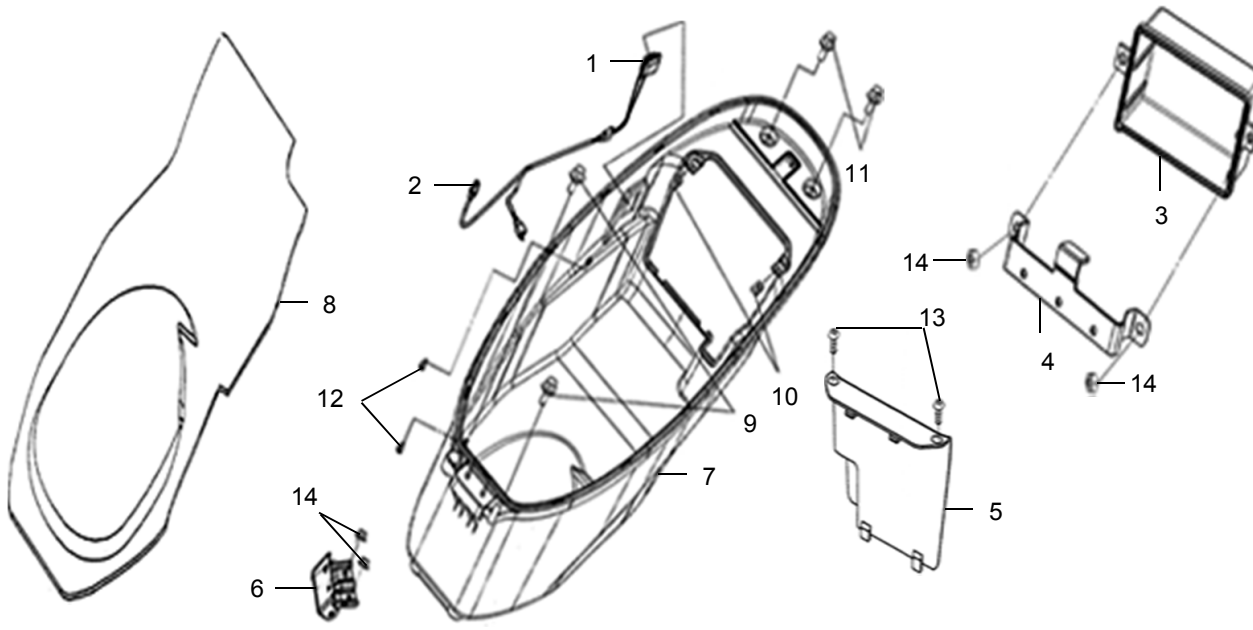
**Service Item**  
**Phụ Tùng Cung cấp**

14	83520-VJ3-000
15	83620-VJ3-000
16	8113B-VJ3-000
17	90111-M9Q-800
18	90118-HAA-000
19	90302-M9Q-000
20	90302-SA4-010
21	93404-06012-07
22	93903-34320
23	93903-35280
24	93903-44380
25	94050-06080

STT No.	Mã số phụ tùng Part No.	Tên phụ tùng Description	UNIT PRICE	Mã E/C.		Ghi chú Remark
				VJ7		
13	81148-VJ3-000	Lug. Hook Holder		1		
14	83520-VJ3-0003-IL	R. Side Cover	37.20	1		IL-GREY, RT-RED, WB-WHITE IL-GREY, RT-RED, WB-WHITE
15	83620-VJ3-0003-IL	L. Side Cover	37.20	1		
16	8113B-VJ3-0000	Luggage Hook A Ass'y	11.60	1		
17	90111-M9Q-8000-L1	Flange Bolt 6 mm	0.70	8		
18	90118-HAA-000	Washer Bolt 5x14	1.00	4		
19	90302-M9Q-0000	Washer Bolt 5x12	0.70	4		
20	90302-SA4-003B	Spring Nut 4 mm	0.70	6		
21	93404-06012-07	Washer Bolt 6x12	0.80	2		
22	93903-34320-00	Tapping Screw 4x12	0.60	4		
23	93903-35280-00	Tapping Screw 5*12	0.50	8		
24	93903-44380	Tapping Screw 4x12	1.00	12		
25	94050-06080	Flange Nut 6 mm	1.00	2		

**LUGGAGE BOX**  
**HỘC HÀNH LÝ**

**F08**



**Service Item**  
**Phụ Tùng Cung cấp**

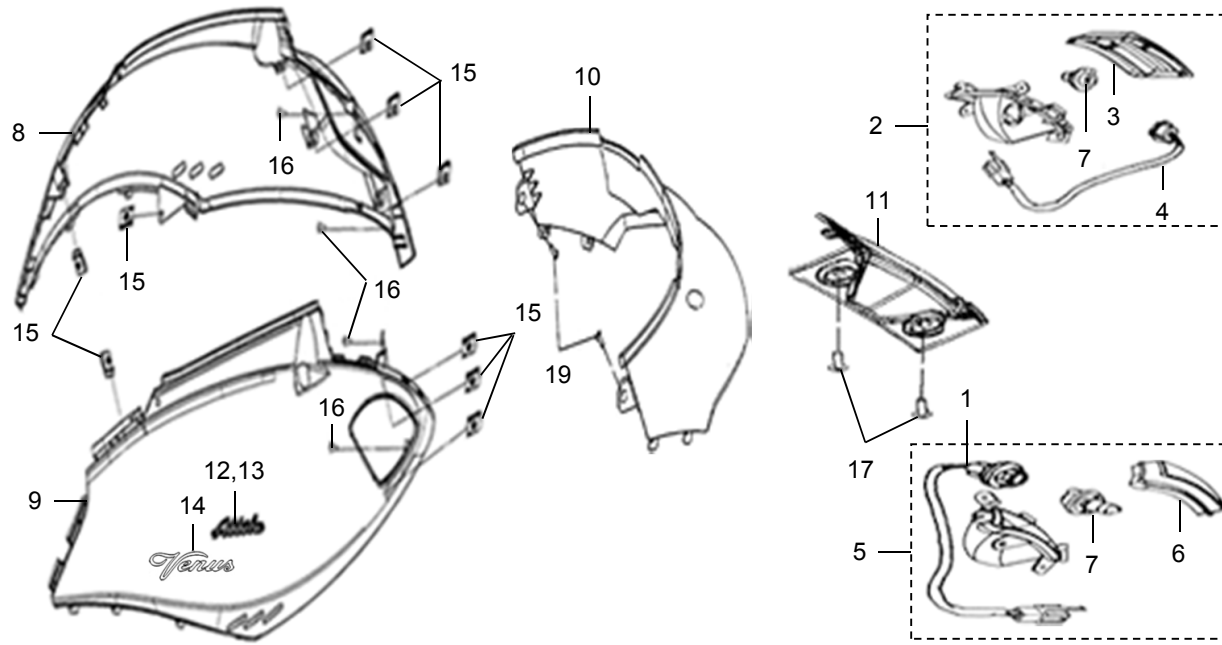
1	35370-VJ3-000
2	35380-VUA-000
3	50321-VJ3-000
4	50324-VJ3-000
	50324-VJ3-900
5	50326-VJ3-000
	50326-VJ3-900
6	77110-VUA-000
7	81250-VJ3-000
8	83630-VJ3-000
9	90111-M9Q-800
10	90302-SA4-010
11	93404-06012-07
12	93903-34380
13	93903-44380
14	94050-06080

STT No.	Mã số phụ tùng Part No.	Tên phụ tùng Description	UNIT PRICE	Mã E/C.		Ghi chú Remark
				VJ7		
1	35370-VJ3-0000	Luggage Box Light Ass'y	11.60	1		
2	35380-VUA-0000	Lamp Switch Ass'y	10.00	1		
3	50321-VJ3-0001	Battery Case Comp	6.70	1		
4	50324-VJ3-0000	Battery Band	8.00	1		
5	50326-VJ3-0002	Battery Cover	10.00	1		
6	77110-VUA-000	Seat Hinge Comp		1		
7	81250-VJ3-0003	Luggage Box	73.20	1		
8	83630-VJ3-0000	Luggage Box Mat Comp	66.50	1		
9	90111-M9Q-8000-L1	Flange Bolt 6 mm	0.70	2		
10	90302-SA4-003B	Spring Nut 4 mm	0.70	2		
11	93404-06012-07	Washer Bolt 6x12	0.80	2		
12	93903-34280	Tapping Screw 4x12	0.80	2		
13	93903-44380	Tapping Screw 4x12	1.00	2		
14	94050-06080	Flange Nut 6 mm	1.00	4		

**BODY COVER - SIDE COVER**

**ÓP SƯỜN - ÓP HÔNG**

**F09**



**Phụ Tùng Cung cấp**

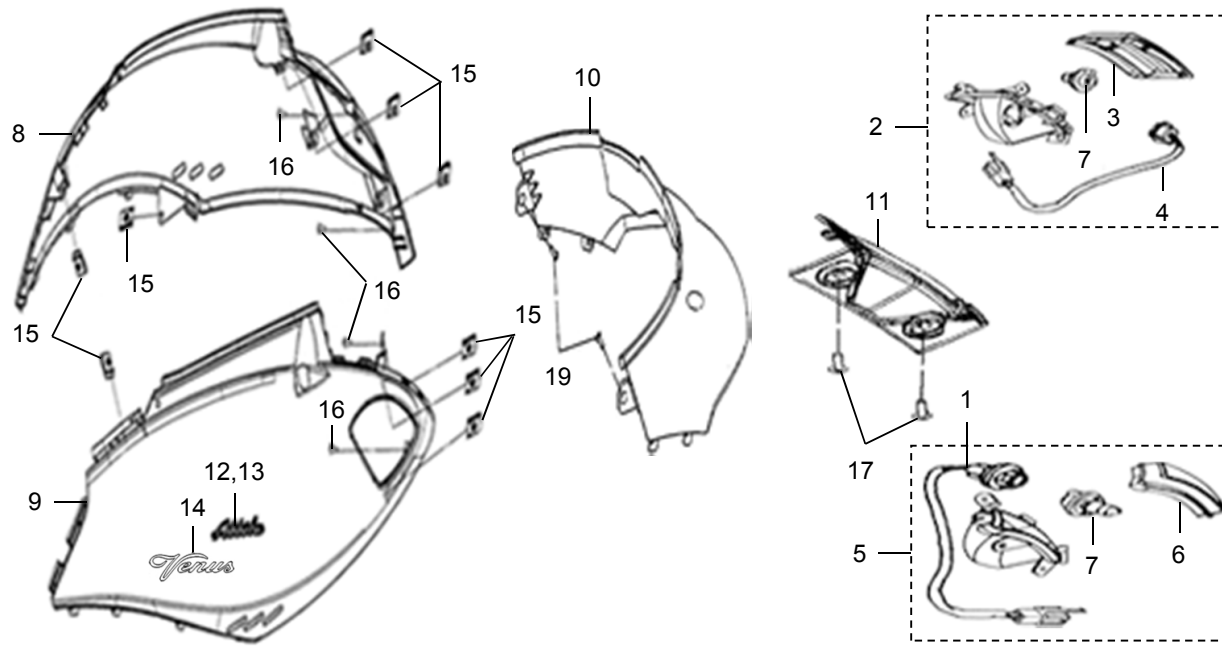
1	33468-VJ3-000
2	33600-VJ3-000
3	33602-VJ3-000
4	33618-VJ3-000
5	33650-VJ3-000
6	33662-VJ3-000
7	34905-VS1-000
8	83500-VJ3-000
9	83600-VJ3-000
10	83750-VJ3-000
11	83751-VJ3-000
12	87128-VT5-000
13	87138-VT5-000
14	87148-VJ3-000
	87148-VJ7-000
15	90302-SA4-010

STT No.	Mã số phụ tùng Part No.	Tên phụ tùng Description	UNIT PRICE	Mã E/C.		Ghi chú Remark
				VJ7		
1	33468-VJ3-000	Rr. L. Cord Comp		1		
2	33600-VJ3-0001	Rr. R Winker Ass'y	28.30	1		
3	33602-VJ3-000	Rr. R. Winker Lens		1		
4	33618-VJ3-000	Rr. R. Cord Comp		1		
5	33650-VJ3-0001	Rr. L. Winker Ass'y	28.30	1		
6	33662-VJ3-000	Rr. L. Winker Lens		1		
7	34905-VS1-000	Winker Bulb 12V/10W		2		
8	83500-VJ3-0003-IL	R. Body Cover	68.30	1		IL-GREY, RT-RED, WB-WHITE
9	83600-VJ3-0003-IL	L. Body Cover	68.30	1		IL-GREY, RT-RED, WB-WHITE
10	83750-VJ3-0002-IL	Rr. Up. Center Cover	26.70	1		IL-GREY, RT-RED, WB-WHITE
11	83751-VJ3-0001-IL	Rr Lwr Center Cover	16.70	1		IL-GREY, RT-RED, WB-WHITE
12	87128-VT5-0000	R. Body Cover Emblem	14.30	1		
13	87138-VT5-0000	L. Body Cover Emblem	14.90	1		
14	87148-VWA-0001	Body Cover Emblem A ( VENUS )	10.00			
	87148-VJ7-000	Body Cover Emblem A ( ELIZABETH )		2		
15	90302-SA4-003B	Spring Nut 4 mm	0.70	10		



**BODY COVER - SIDE COVER**  
**ÓP SƯỜN - ÓP HÔNG**

**F09**



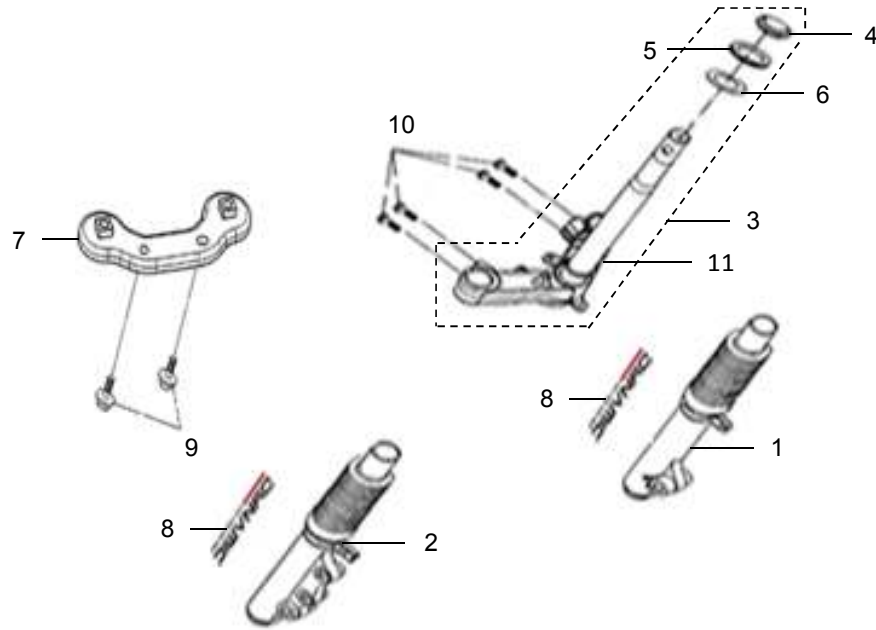
**Service Item**  
**Phụ Tùng Cung cấp**

- 16 93903-34320
- 17 93903-44380
- 18 93903-35280

STT No.	Mã số phụ tùng Part No.	Tên phụ tùng Description	UNIT PRICE	VJ7	Mã E/C.	Ghi chú Remark
16	93903-34320-00	Tapping Screw 4*12	0.60	4		
17	93903-44380	Tapping Screw 4*12	1.00	2		
18	93903-35280-00	Tapping Screw 5*12	0.50	5		

**FRONT CUSHION - STEERING STEM**  
**PHỤ CÙNG TRƯỚC - CỘT LÁI**

**F10**



**Service Item**  
**Phụ Tùng Cung cấp**

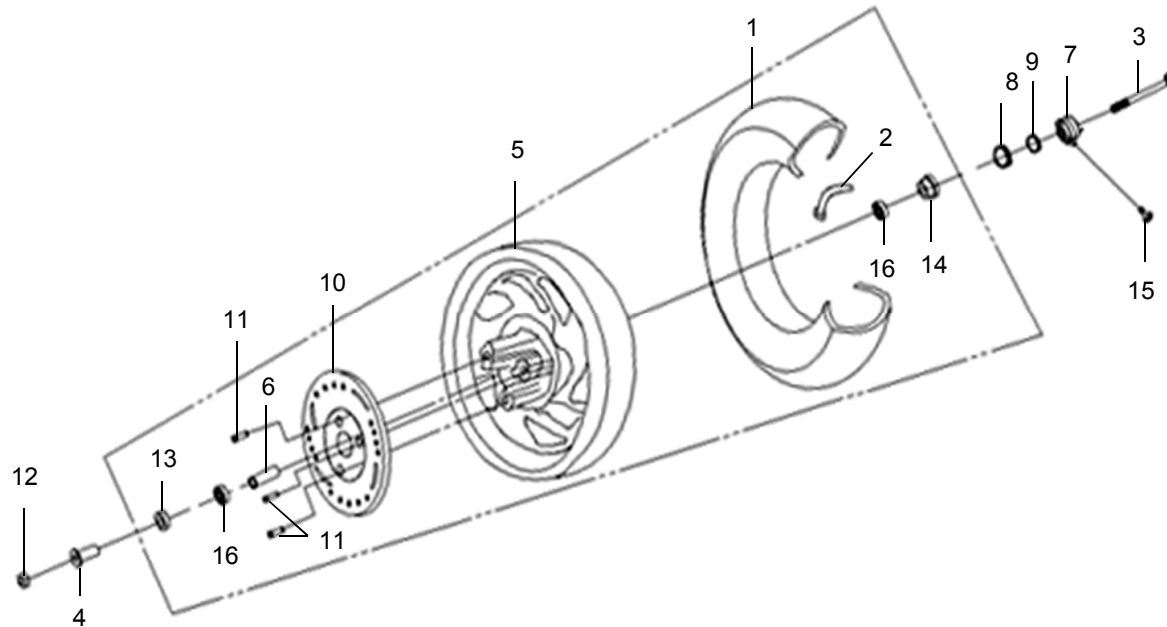
1	5140A-VJ3-000 51400-VJ6-000
2	5150A-VJ3-000 51500-VJ6-000
3	5320E-VJ3-000 5320E-VJ6-000
4	53212-M9Q-000
5	53214-M9Q-000
6	53215-M9Q-000
7	61110-VJ3-000 61110-VJ3-900
8	87170-VTB-000
9	95801-06010-08
10	95801-08040-08
11	53200-VJ3-000 53200-VJ6-000

STT No.	Mã số phụ tùng Part No.	Tên phụ tùng Description	UNIT PRICE	Mã E/C.		Ghi chú Remark
				VJ7		
1	5140A-VJ3-0001	R. Fr. Cushion Set	166.40	1		
2	5150A-VJ3-0001	L. Fr. Cushion Set	166.40	1		
3	5320E-VJ3-0002	Steering Stem Comp Set	166.40	1		
4	53212-M9Q-000	Race Steering Bottom Cone	12.10	1		
5	53214-M9Q-000	Steering Dust Seal	0.00	1		
6	53215-M9Q-000	Steering Head Dust Seal Washer	0.00	1		
7	61110-VJ3-0000	Fr. Fender Stay	6.70	1		
8	87170-VTB-000	Fr. Cushion Mark		2		
9	95801-06010-08	Flange Bolt 6*10mm	0.80	2		
10	95801-08040-08	Flange Bolt 8*40	2.00	4		
11	53200-VJ3-000	Steering Stem Comp		1		

**FRONT WHEEL  
BÁNH TRƯỚC**

**F11**

**Service Item  
Phụ Tùng Cung cấp**

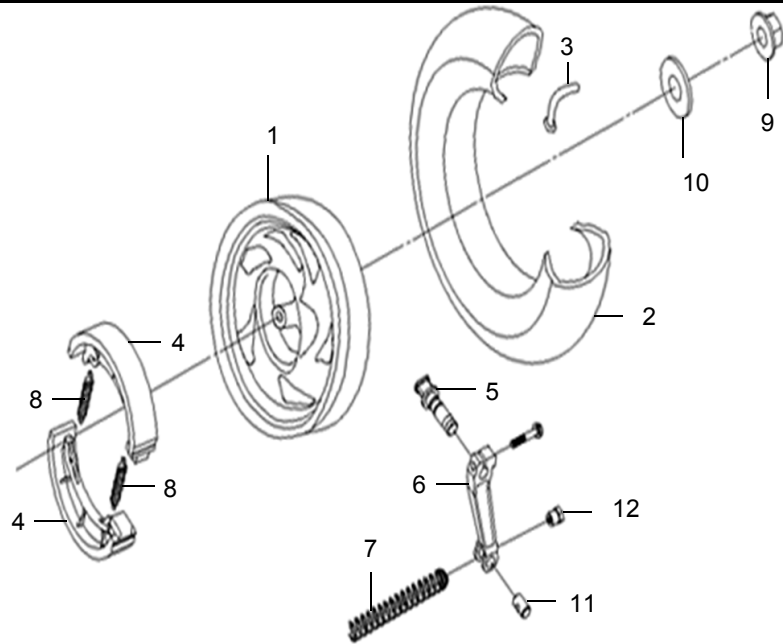


1	42710-VTC-000
2	42753-M92-300
3	44301-VT5-000
4	44311-VUA-000
5	44601-VT5-000
6	44620-H6C-000
7	44800-VTB-000
8	44806-VTB-000
10	45121-M9P-000
11	90105-KR3-000
12	90306-M9Q-000
13	90754-M9Q-000
14	91258-M9Q-000
15	93891-05022-07
16	96150-62010-10

STT No.	Mã số phụ tùng Part No.	Tên phụ tùng Description	UNIT PRICE	VJ7	Mã E/C.	Ghi chú Remark
1	1TC 110/90-10 M6108	Tubeless Tire Set	139.80	1		
2	42753-M92-0003-M4	Rim Valve	11.60	1		
3	44301-VT5-0000	Fr. Wheel Axle	13.30	1		
4	44311-VUA-0001	Fr. Wheel Side Collar	5.00	1		
5	44601-VT5-0000-VN	Fr. Wheel Cast	216.40	1		
6	44620-H6C-0001	Fr. Axle Distance Collar	4.00	1		
7	44800-VT7-0003	SPDMT Gear Box Ass'y	59.90	1		
8	44806-VTB-000	Speedometer Gear		1		
9	44807-VTB-000	Washer Gear Box Pinion		1		
10	45121-M9P-0000	Fr. Brake Disk	106.50	1		
11	90105-KR3-000A-L1	Fr. Disk Bolt 8x24	2.70	3		
12	90306-M9Q-0000	Self Lock Nut 12 mm	5.20	1		
13	90754-M9Q-000	Dust Seal 20x32x5	3.30	1		
14	91258-M9Q-0000-M1/M2	Speedometer Gear Box Seal	3.60	1		
15	93891-05022-07	Washer Bolt 5x22	0.70	1		
16	96150-62010-10	Radial Ball Bearing 6201 (UU)		2		

**REAR WHEEL  
BÁNH SAU**

**F12**



**Service Item  
Phụ Tùng Cung cấp**

1	42601-VT5-000
2	42710-VTC-000
3	42753-M92-300
4	43120-VJ3-000
5	43141-VT4-000
6	43410-VJ3-000
	43410-VJB-000
7	43472-VUA-000
8	45133-M9Q-900
9	90305-M9Q-900
10	90501-M9Q-000
11	95015-32001
12	95015-42000
13	95701-06028-00

STT No.	Mã số phụ tùng Part No.	Tên phụ tùng Description	UNIT PRICE			Mã E/C.	Ghi chú Remark
				VJ7			
1	42601-VT5-0000-VN	Rr. Wheel Cast.	249.60		1		
2	1TC 110/90-10 M6108	Tubeless Tire Ass'y	139.80		1		
3	42753-M92-0003-M4	Rim Valve	11.60		1		
4	4312B-VJ3-0000	Brake Shoe Comp.	27.30		2		
5	43141-VT4-0002	Rr. Brake Cam	6.30		1		
6	43410-VJ3-0001	Rr. Brake Arm Comp.	16.60		1		
7	43472-T5C-0000	Rr. Brake Return Spring	1.60		1		
8	45133-M9Q-900	Brake Shoe Spring	0.80		2		
9	90305-M9Q-9001-L1	Self Lock Nut 16 mm	1.60		1		
10	90501-M9Q-0000-L1	Washer 16 mm	0.70		1		
11	95015-32001	Brake Arm Joint B	1.00		1		
12	95015-42000-00	Adjust Nut B	2.10		1		
13	95701-06028-00	Flange Bolt 6x28	0.70		1		

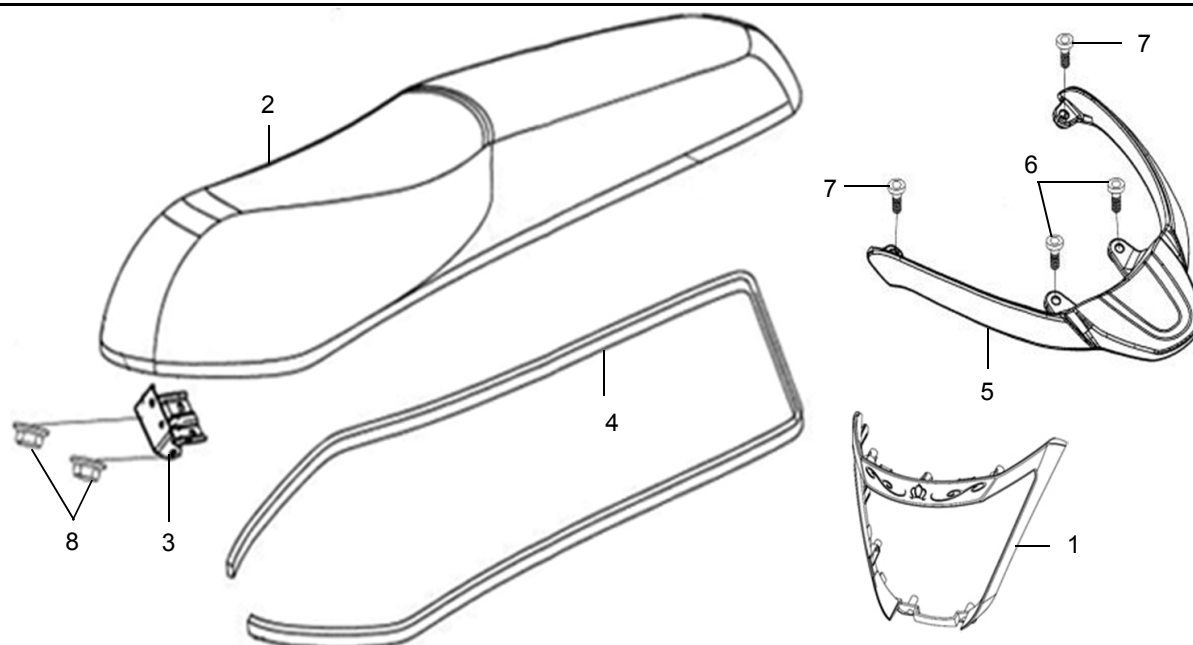
## SEAT - REAR CARRIER

YÊN - TAY NẮM SAU

# F13

Service Item

Phụ Tùng Cung cấp



1	33701-VJ3-000
2	77100-VJ3-000 77100-VJ6-000
3	77110-VUA-000
4	77115-VJ3-000
5	81200-VJ3-000 81200-VJ6-000
6	90105-M9Q-900
7	93406-08012-08
8	94050-06080

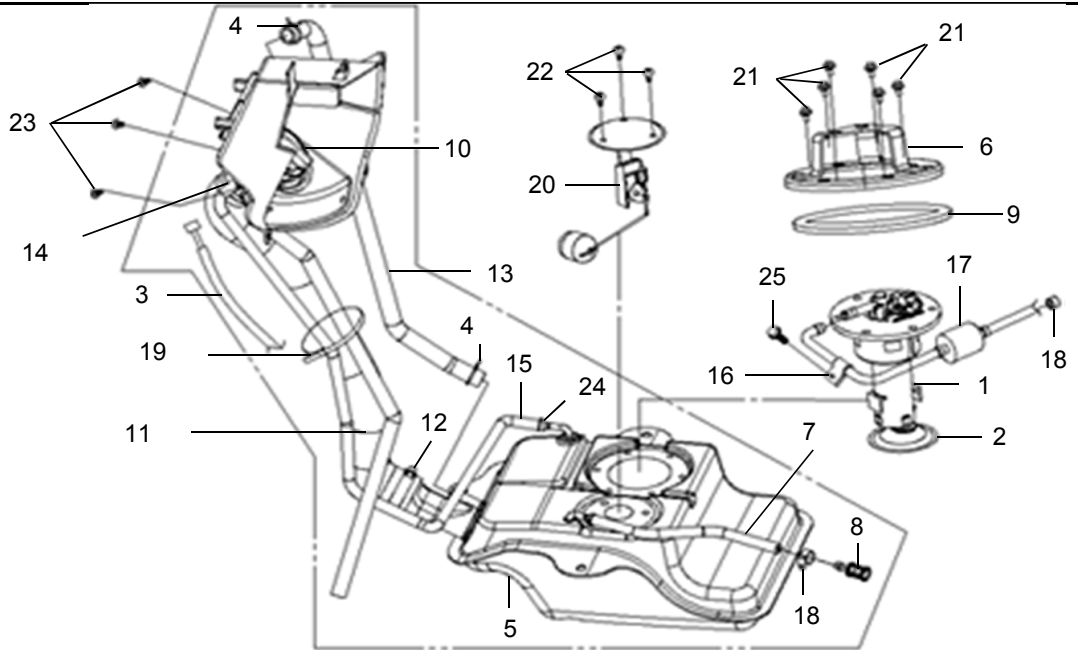
STT No.	Mã số phụ tùng Part No.	Tên phụ tùng Description	UNIT PRICE	Mã E/C.		Ghi chú Remark
				VJ7		
1	33701-VJ3-0003	Tail Light Rim	36.70	1		
2	7710A-VJ3-0003-T1	DOUBLE SEAT SET	196.40	1		
3	77110-VUA-000	Seat Hinge Comp		1		
4	77115-VJ3-000	Rubber Seal		1		
5	81200-VJ3-0000-SM	Rr. Carrier Comp.	149.70	1		
6	90105-M9Q-0000	Special Bolt 8mm	10.70	2		
7	93406-08012-08	Washer Bolt 8x12	0.70	2		
8	94050-06080	Flange Nut 6 mm	1.00	2		

**FUEL TANK - FUEL PUMP**  
**THÙNG XĂNG - BƠM XĂNG**

**F14**

**Service Item**

**Phụ Tùng Cung cấp**

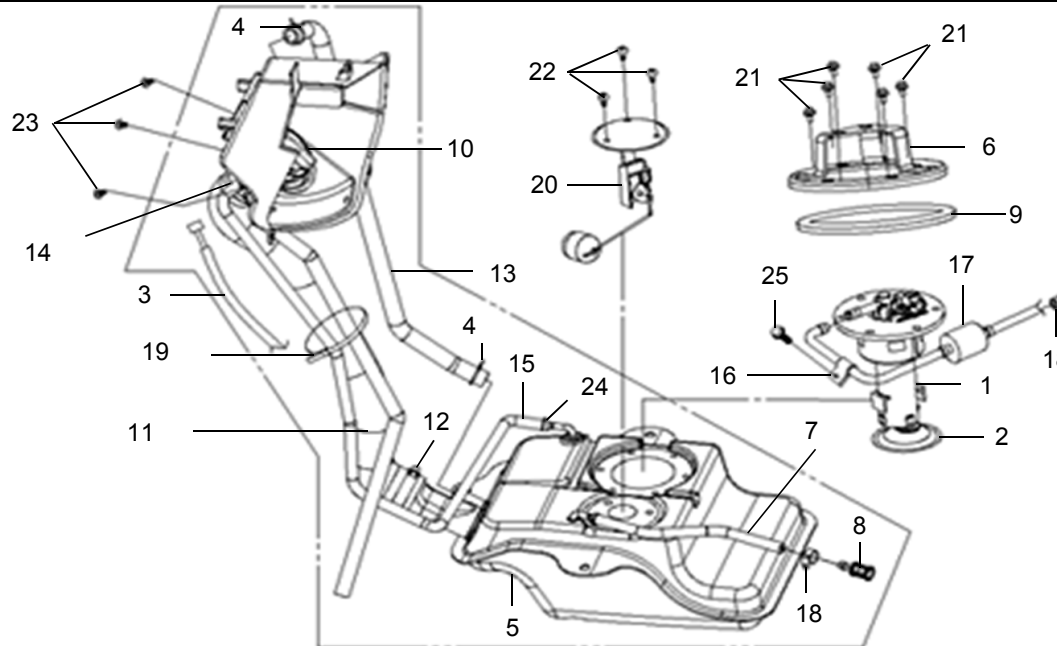


1	1670A-ADC-000
2	16711-M9Q-000
3	17312-VJ3-000
4	17369-KB4-670
5	17500-VJ3-000
6	17503-VJ3-000
7	17504-VJ3-000
8	17505-VUA-000
9	17510-VWA-000
10	17520-VWD-000
11	17651-VJ3-000
12	17652-TAA-000
13	17654-VJ3-000
14	17660-VUA-000
15	17689-VJ3-000
16	17787-ADC-0000

STT No.	Mã số phụ tùng Part No.	Tên phụ tùng Description	UNIT PRICE	Mã E/C.		Ghi chú Remark
				VJ7		
1	1670A-ADC-0000	Fuel Pump Ass'y	532.50	1		
2	16711-M9Q-000	Fuel Filter Comp	65.20	1		
3	17312-VJ3-000	Fuel Cap Lock Cable		1		
4	17369-KB4-670A-L1	Breather Tube Clip	0.70	2		
5	17500-VJ3-0002	Fuel Tank Comp.	116.50	1		
6	17503-VJ3-0001	Fuel Tank Stay Comp	10.70	1		
7	17504-VJ3-0002	Fuel Drain Tube	6.70	1		
8	17505-VUA-0000	Fuel Drain Plug	3.30	1		
9	17510-VWA-0000	Fuel Pump Packing	9.30	1		
10	17520-VWD-000	Fuel Filter Cap Comp.		1		
11	17651-VJ3-000	Fuel Neck Tube		1		
12	17652-TAA-000	Filler Tube Clip	5.20	2		
13	17654-VJ3-000	Breather Tube B		1		
14	17660-VUA-0006	Filler Pipe Comp	23.30	1		
15	17689-VJ3-000	Fuel Tube		1		
16	17787-ADC-000	Fuel Tube Clamp A		1		

**FUEL TANK - FUEL PUMP**  
**THÙNG XĂNG - BƠM XĂNG**

**F14**



**Service Item**  
**Phụ Tùng Cung cấp**

17	1778A-VJ3-000
18	19505-H5D-000
19	32161-T15-000
20	37800-VJ3-000
21	90111-VWA-020
22	93892-05012-08
23	93903-34320
24	95002-02100
25	95801-06012-08

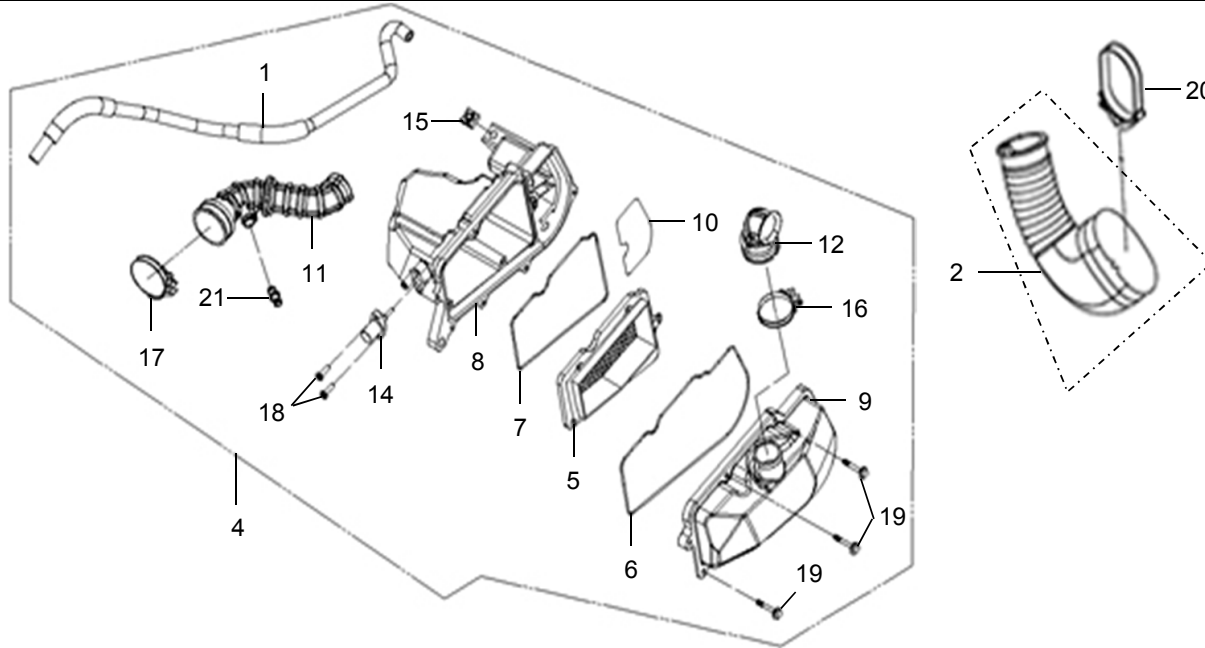
STT No.	Mã số phụ tùng Part No.	Tên phụ tùng Description	UNIT PRICE	VJ7	Mã E/C.	Ghi chú Remark
17	1778A-VJ3-0006	Fuel Strainer Ass'y	149.70	1		
18	19505-H5D-0001	Hose Clamp	1.60	3		
19	32161-T15-0002	Wire Band 250	1.00	1		
20	37800-VJ3-0004	Fuel Unit Ass'y	33.30	1		
21	90111-VWA-020	Flange Bolt 5mm		6		
22	93892-05012-08	Washer Screw 5*12	2.50	3		
23	93903-34320-00	Tapping Screw 4*12	0.60	3		
24	95002-02100	Tube Clip B10		2		
25	95801-06012-08	Flange Bolt 6X12	0.80	1		

**AIR CLEANER**  
**BỘ LỌC GIÓ**

**F15**

Service Item

Phụ Tùng Cung cấp



2	11345-VJ3-000
4	17200-VJ3-000
5	17211-KAA-000
14	37830-HMC-000
14	37830-HMC-000

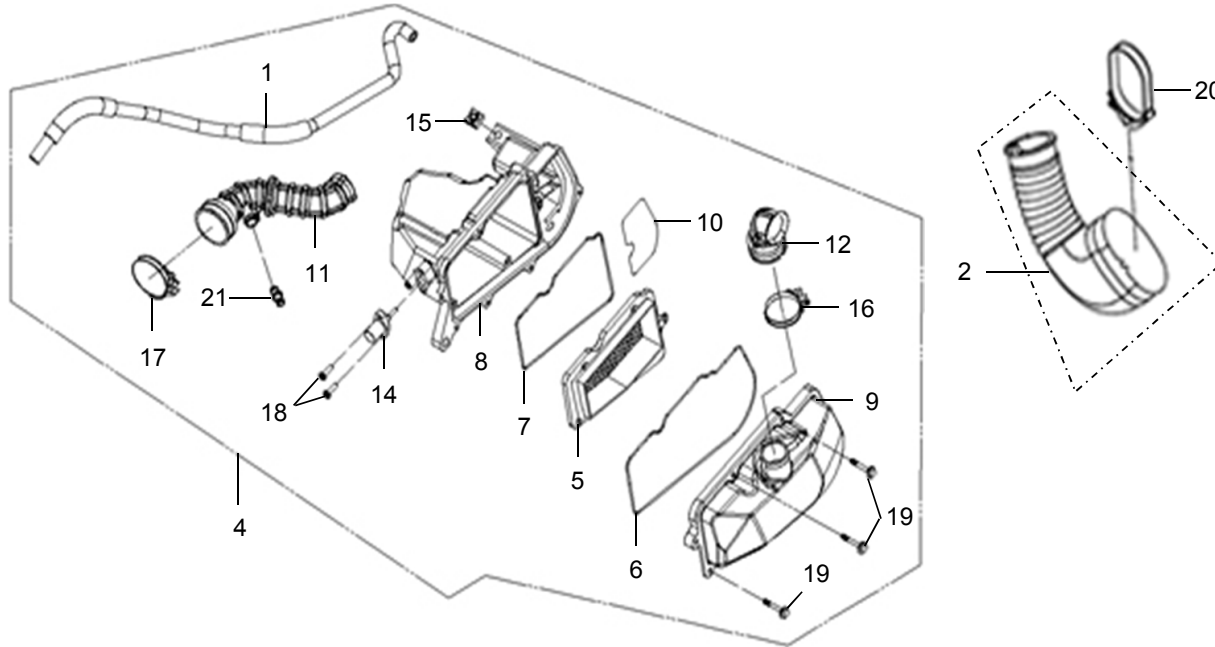
STT No.	Mã số phụ tùng Part No.	Tên phụ tùng Description	UNIT PRICE	Mã E/C.		Ghi chú Remark
				VJ7		
1	11211-F8A-000	Breather Tube		1		Không Dùng
2	11345-VJ3-0001	L. Cover Duct	16.60	1		
3	1134B-VJ3-000	L. Cover Duct Ass'y		1		
4	17200-VJ3-0005	Air Cleaner Assy	159.70	1		
5	17211-KAA-000	Air/C Element Comp		1		
6	17213-KAA-010	Air/C Case Seal A		1		
7	17214-KAA-000	Air/C Case Seal B		1		
8	17230-VJ3-000	Air/C Case Comp.		1		
9	17231-VJ3-000	Air/C Cover Comp.		1		
10	17233-VJ3-000	Air/C Case Cap		1		
11	17253-VJ3-000	Air/C Connecting Tube		1		
12	17257-VJ3-000	Air/C Inlet Duct A		1		
13	17259-VJ3-000	Air/C. Case Duct A		1	Không Dùng	



**AIR CLEANER**  
**BỘ LỌC GIÓ**

**F15**

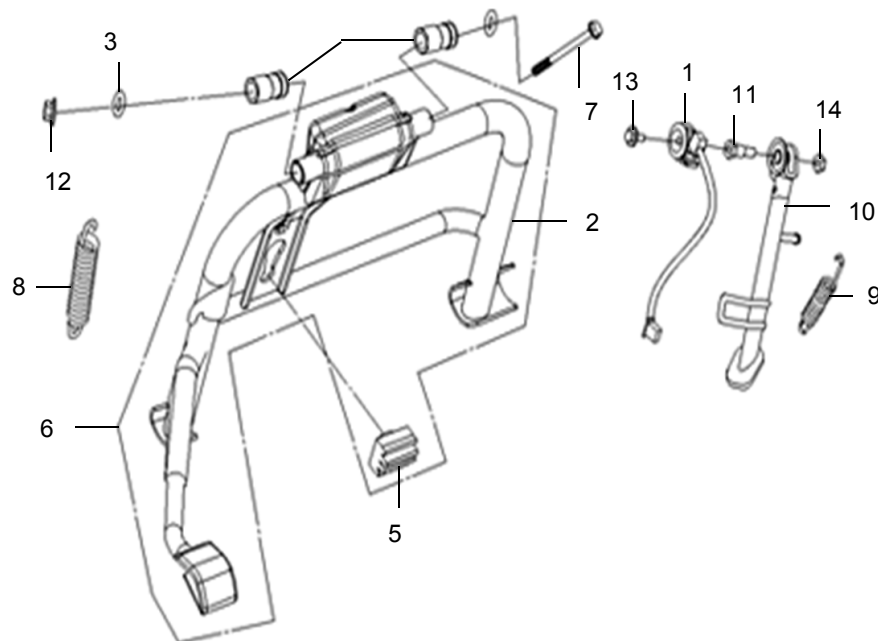
**Service Item**  
**Phụ Tùng Cung cấp**



STT No.	Mã số phụ tùng Part No.	Tên phụ tùng Description	UNIT PRICE	Mã E/C.		Ghi chú Remark
				VJ7		
14	37830-HMC-0001	Air Temp. Sensor	116.50	1		
15	90305-F8A-000	Clip Nut 6mm		1		
16	90652-G03-000	Air Cleaner Tube Band 40	10.20	1		
17	90652-M8Q-000	Air Cleaner Tube Band 46	8.60	1		
18	93891-05016-07	Washer Screw 5*16	1.30	2		
19	93903-25480	Tapping Screw 5*20	0.60	7		
20	11346-M9Q-0000	L. Cover Duct Band	3.30	1		
21	17359-M9Q-0000	Breather Tube Joint	2.00	1		

**MAIN STAND  
CHÂN CHỐNG**

**F16**



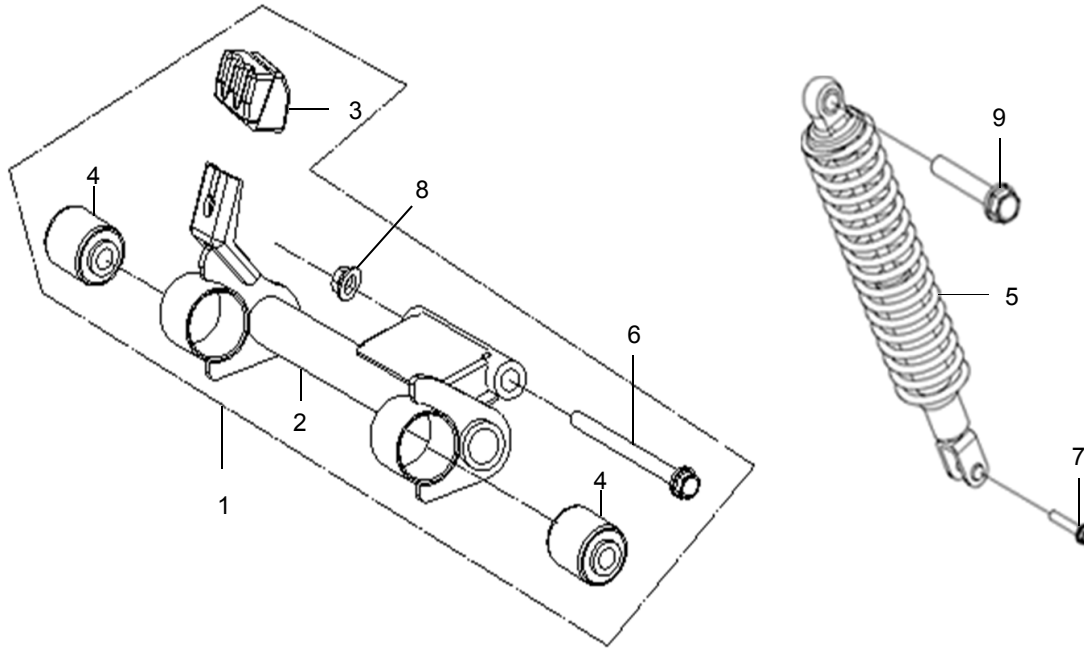
**Service Item  
Phụ Tùng Cung cấp**

1	36500-HMA-900
2	50500-VJ3-000 50500-VJ3-900
3	50503-F6B-000
4	50504-F6B-000
5	50505-VJ3-000
6	5050A-VJ3-000 5050A-VJ3-900
7	50512-F6B-900
8	50522-A3U-000
9	50522-F8F-000
10	50530-VJ1-000 50530-VJ1-900
11	90108-VJ1-000
12	90309-M9Q-000
14	94030-08080-0S

STT No.	Mã số phụ tùng Part No.	Tên phụ tùng Description	UNIT PRICE	Mã E/C.		Ghi chú Remark
				VJ7		
1	36500-HMA-9001-L1	Side Stand Sw. Comp	33.30	1		
2	50500-VJ3-000	Main Stand Comp.		1		
3	50503-F6B-0000	Main Stand Washer	1.00	2		
4	50504-F6B-0001-L1	Main Stand Collar	8.30	2		
5	50505-VJ3-0000	Stand Stopper Rubber	1.60	1		
6	5050A-VJ3-0002	Main Stand Ass'y	69.90	1		
7	50512-F6B-9000-L1	Main Stand Pivot Bolt	12.00	1		
8	50522-A3U-0001	Main Stand Spring	2.00	1		
9	50522-F8F-0002	Side Stand Spring	3.30	1		
10	50530-VJ1-0005	Side Stand Comp.	14.90	1		
11	90108-VJ1-0000	Side Stand Pivot Screw	2.30	1		
12	90309-M9Q-0000	Flange Nut 8mm	1.90	1		
13	93404-06016-07	Washer Bolt 6 X 16	0.80	1		
14	94030-08080-0S-L1	Hex Nut 8 mm	1.00	1		

**ENG HANGER - REAR CUSHION**  
**GIÁ TREO MÁY - PHỤC SAU**

**F17**



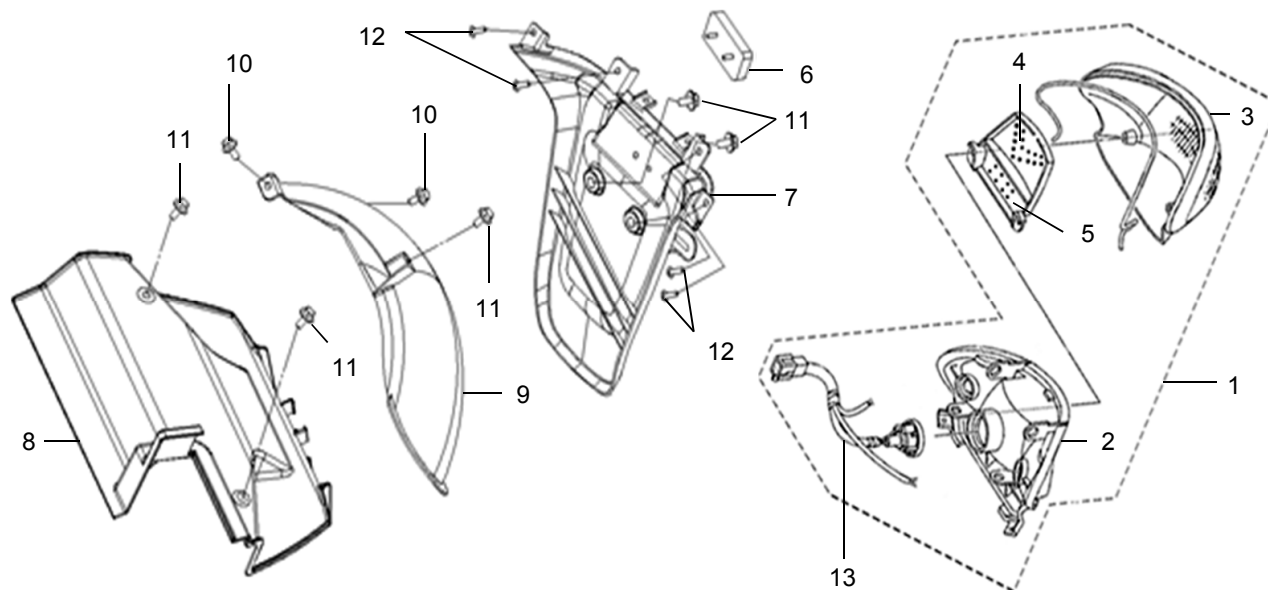
**Service Item**  
**Phụ Tùng Cung cấp**

1	50350-VJ3-000
	50350-VJ3-900
2	50351-VJ3-000
	50351-VJ3-900
3	50352-ADB-000
4	50353-M9Q-000
5	52400-VJ3-000
	52400-VJ3-900
6	90105-F6B-900
7	93201-08032-0G
8	94050-10070
9	95801-10040-07

STT No.	Mã số phụ tùng Part No.	Tên phụ tùng Description	UNIT PRICE	VJ7	Mã E/C.	Ghi chú Remark
1	50350-VJ3-0002	Engine Hanger Ass'y	106.50	1		
2	50351-VJ3-000	Engine Hanger Comp		1		
3	50352-ADB-000	Link Stopper Rubber	3.10	1		
4	50353-M9Q-000	Swing Lock Bush	10.10	2		
5	52400-VJ3-0001	Rr. Cushion Ass'y	91.60	1		
6	90105-F6B-9000	Flange Bolt 10x191	6.00	1		
7	93201-08032-OH	Hex Bolt 8x32	3.00	1		
8	94050-10070	Flange Nut 10mm	1.30	1		
9	95801-10040-07	Flange Bolt 10*40	2.10	1		

**RR FENDER - TAIL LIGHT**  
**VÈ SAU & ĐÈN SAU**

**F18**



**Service Item**  
**Phụ Tùng Cung cấp**

1	33700-VJ3-000
	33700-VJ6-000
2	33701-VJ3-000
3	33702-VJ3-000
	33702-VJ6-000
4	33706-VJ3-000
5	33709-VJ3-000
6	33741-VT5-000
7	80100-VJ3-000
8	80105-VJ3-000
9	80107-VJ3-000
10	90111-M9Q-800
11	93404-06012-07
12	93903-44380
13	33718-VJ3-000

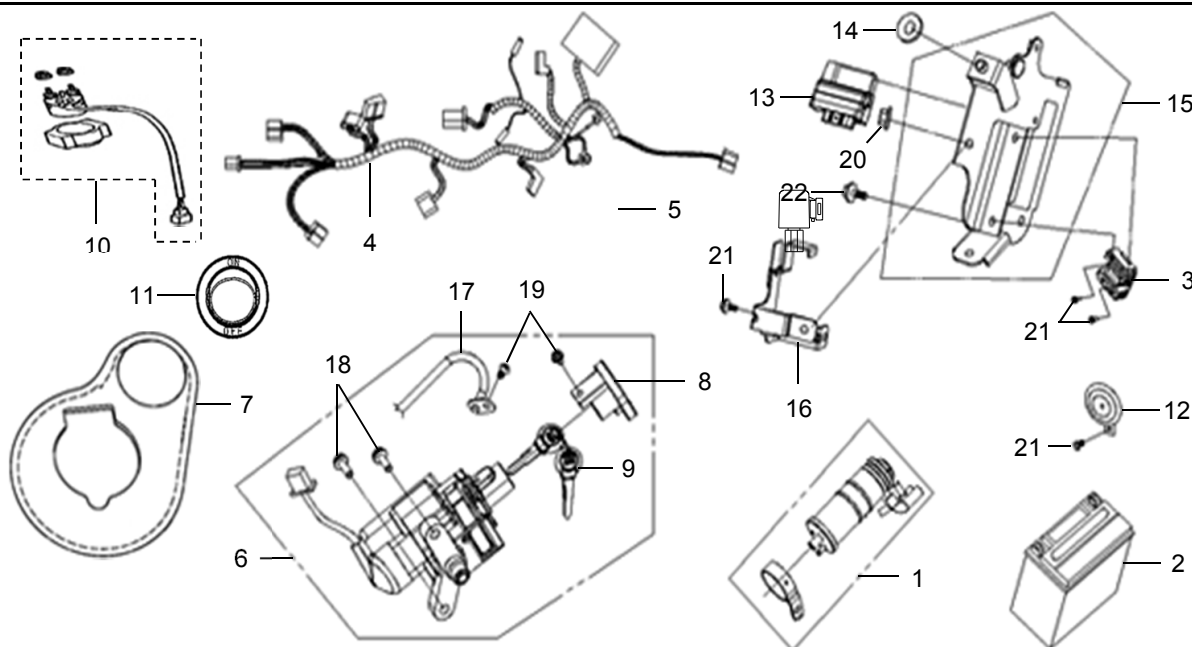
STT No.	Mã số phụ tùng Part No.	Tên phụ tùng Description	UNIT PRICE	Mã E/C.		Ghi chú Remark
				VJ7		
1	33700-VJ3-0003	Tail Light Ass'y	213.10	1		
2	33701-VJ3-0003	Tail Light Base	36.70	1		
3	33702-VJ3-000	Tail Light Lens		1		
4	33706-VJ3-000	Tail Light Led Comp		1		
5	33709-VJ3-000	License Led Comp		1		
6	33741-VT5-0000	Reflex Reflector	6.70	1		
7	80100-VJ3-0002	Rr. Fender	16.70	1		
8	80105-VJ3-0002	Rr. Inner Fender	30.00	1		
9	80107-VJ3-0002	Rr. Mudguard	26.70	1		
10	90111-M9Q-8000-L1	Flange Bolt 6mm	0.70	2		
11	93404-06012-07	Washer Bolt 6X12	0.80	5		
12	93903-44380	Tapping Screw 4X12	1.00	4		
13	33718-VJ3-000	Tail Light Cord Comp		1		

**WIRE HARNESS**  
**BỘ DÂY ĐIỆN**

**F19**

**Service Item**

**Phụ Tùng Cung cấp**

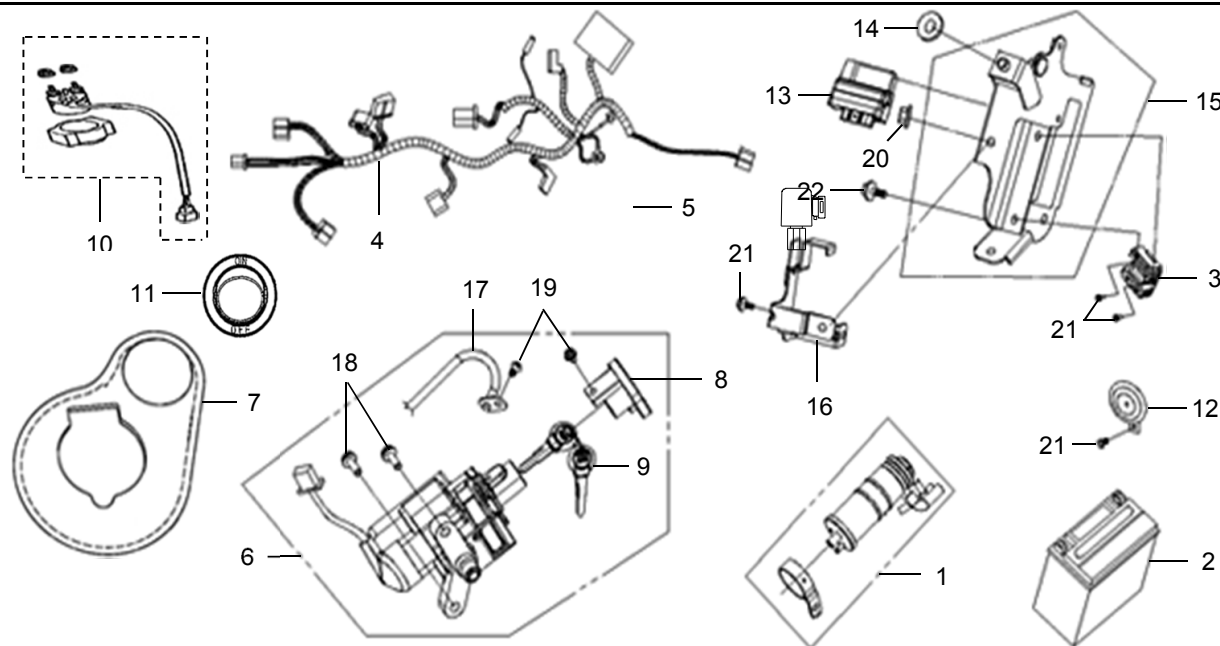


1	1730B-VJ3-000
2	31500-VS1-020 31500-H12-000
3	31600-VJ3-000
4	32100-VJ4-000 32100-VJ6-000
5	33800-VUH-000
6	35010-VJ3-000
7	35011-VJ3-000
8	35110-VJ3-000
9	35111-VT3-000 3912A-VT3-000
10	3585A-VJ3-000
11	36600-VJ4-000
12	38110-VUA-000
13	3871B-VJ4-000

STT No.	Mã số phụ tùng Part No.	Tên phụ tùng Description	UNIT PRICE	Mã E/C.		Ghi chú Remark
				VJ7		
1	1730B-VJ3-0004	Canister Set	122.50	1		
2	31500-VS1-0204-E1	Battery Ass'y (12V/9AH)	233.00	1		
3	31600-VJ3-0001	Reg. Rec. Comp	319.60	1		
4	32100-VJ4-0004	Wire Harness	376.10	1		
5	33800-VUH-0001	Light Down Control Unit	109.90	1		
6	35010-VJ3-000	Key Set		1		
7	35011-VJ3-0000-SV	Main Switch Panel	10.00	1		
8	35110-VJ3-000	Shutter Comp		1		
9	35111-VT3-000	Key Comp		1		
10	3585A-VJ3-0002	Start Mag. Sw. Set	49.90	1		
11	36600-VJ4-0001	Idling Sw	12.00	1		
12	38110-VUA-0001	Horn Comp.	14.90	1		
13	38710-L3D-0000	ECU ASS'Y	832.10	1		

**WIRE HARNESS**  
**BỘ DÂY ĐIỆN**

**F19**



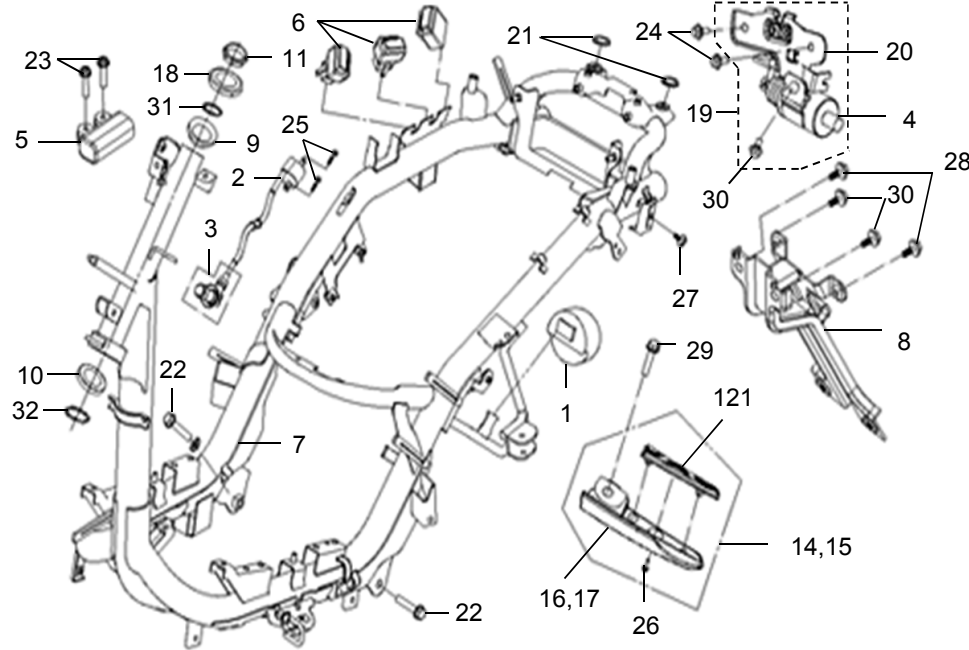
**Service Item**  
**Phụ Tùng Cung cấp**

14	53011-VS1-000
15	64315-VJ3-000
16	64316-VUH-000
17	77240-VUA-000
18	90111-VT3-000
19	93891-05008-08
20	94050-06080
21	95801-06012-08
22	95801-06032-08

STT No.	Mã số phụ tùng Part No.	Tên phụ tùng Description	UNIT PRICE	Mã E/C.		Ghi chú Remark
				VJ7		
14	53011-VS1-0000	Damping Rubber	0.60	1		
15	64315-VJ3-0003	Fr. Cover Stay	26.70	1		
16	64316-VUH-0001	Ecu Protector	5.70	1		
17	77240-VUA-0005	Seat Lock Cable	13.30	1		
18	90111-VT3-0000	Flange Bolt 6x18	0.70	2		
19	93891-05008-08	Washer Screw 5x8	0.80	2		
20	94050-06080	Flange Nut 6mm	1.00	1		
21	95801-06012-08	Flange Bolt 6X12	0.80	4		
22	95801-06032-08	Flange Bolt 6X32	0.80	1		

**FRAME BODY  
KHUNG XE**

**F20**



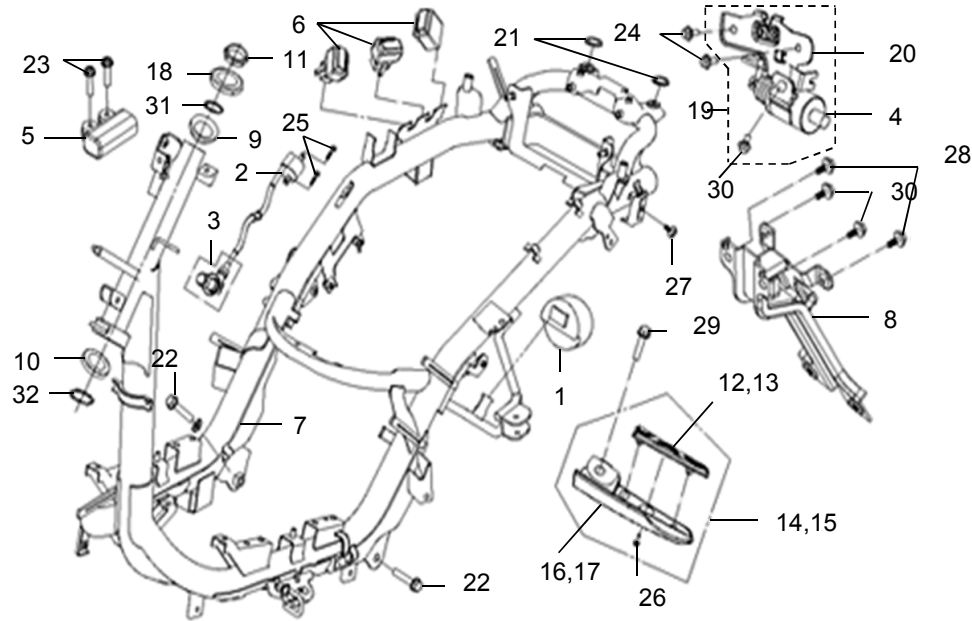
**Service Item  
Phụ Tùng Cung cấp**

2	3051A-VJ3-000
3	30700-F6K-000
4	35870-VUC-000
5	36100-MMA-100
6	3850A-HLA-010
7	50100-VJ3-000
	50100-VJ6-000
8	50109-VJ3-000
	50109-VJ3-900
9	50301-VS1-000
10	50302-M9Q-000
11	50306-VS1-000
12	50623-VT5-000
13	50624-VT5-000
14	5071A-VCA-000
15	5071B-VCA-000

STT No.	Mã số phụ tùng Part No.	Tên phụ tùng Description	UNIT PRICE	Mã E/C.		Ghi chú Remark
				VJ7		
1	11348-VJ3-000	L Cover Duct Plate		1		Không Dùng
2	3051A-VJ3-0003	Ignition Coil Ass'y	86.50	1		
3	30700-F6K-000	Noise Suppressor Cap Ass'y		1		
4	35870-VUC-0000	DC Solenoid Ass'y	48.30	1		
5	36100-MMA-1000-E1	Roll Over Sensor Ass'y	199.70	1		
6	3850A-HLA-0100-A1	Elec. Relay Ass'y	30.00	3		
7	50100-VJ3-0011	Frame Body Comp.	732.30	1		
8	50109-VJ3-0004	Rr. Fender Brkt.	17.30	1		
9	50301-VS1-0000	Strg. Up Race Ball	8.20	1		
10	50302-M9Q-0000	Ball Race(Strg. Bot.)	9.90	1		
11	51718-SB1-0000	Strg. Stem Lock Nut	5.70	1		
12	50623-VT5-0000	R. Pillion Step Mat	5.00	1		
13	50624-VT5-0000	L. Pillion Step Mat	5.00	1		

**FRAME BODY**  
**KHUNG XE**

**F20**



**Service Item**  
**Phụ Tùng Cung cấp**

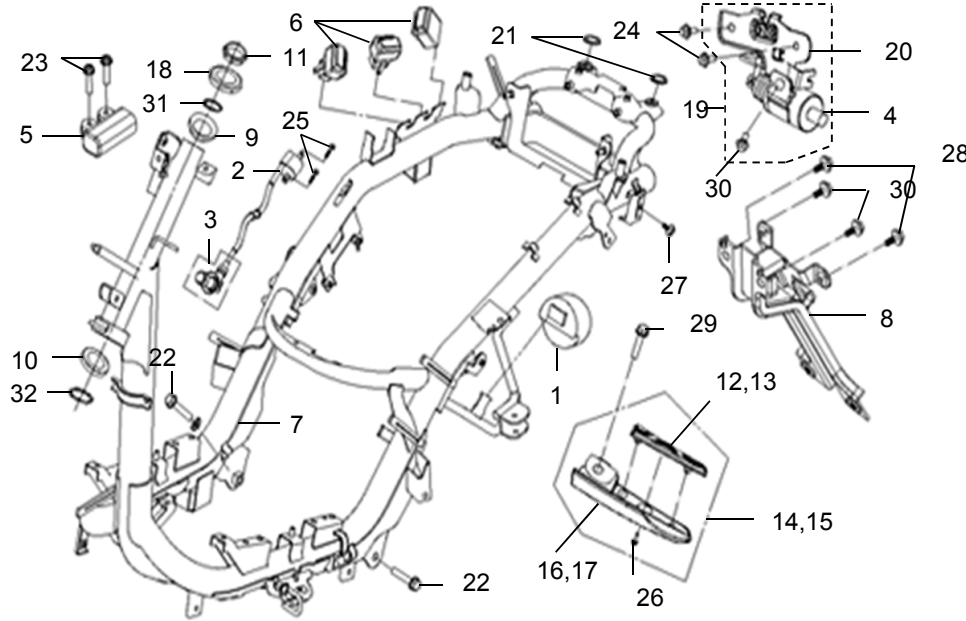
16	50721-VCA-000
17	50722-VCA-000
18	53211-VS1-000
19	77230-VUC-000
20	77235-VUC-000
21	81203-VJ3-000
22	90106-M9Q-900
23	91508-VT3-000
24	93404-06012-07
25	93500-05016-0H
26	93600-05012-0A
27	95801-06010-08
28	95801-06012-08
29	95801-06040-07
30	95801-08012-08
31	96211-05000

STT No.	Mã số phụ tùng Part No.	Tên phụ tùng Description	UNIT PRICE	Mã E/C.		Ghi chú Remark
				VJ7	E/C.	
14	5071A-VCA-0004	R. Pillion Step Ass'y	32.90	1		Không Dùng
15	5071B-VCA-0007	L. Pillion Step Ass'y	20.00	1		
16	50721-VCA-000	R. Pillion Step Bar		1		
17	50722-VCA-000	L. Pillion Step Bar		1		
18	53211-VS1-0000	Strg. Up. Cone Race	8.20	1		
19	77230-VUC-0000	Seat Catch Ass'y	76.60	1		
20	77235-VUC-000	Seat Catch Comp.		1		
21	81203-VJ3-0000	Rr. Carrier Rubber	0.70	2		
22	90106-M9Q-900	Flange Bolt 10x55	2.80	2		
23	91508-VT3-000	Pan Screw 4*20		2		
24	93404-06012-07	Washer Bolt 6*12	0.80	2		
25	93500-05016-00	Screw Pan 5x16	0.40	2		
26	93600-05012-0A	Flat Screw 5*12	1.60	2		
27	95801-06010-08	Flange Bolt 6x10	0.80	1		
28	95801-06012-08	Flange Bolt 6X12	0.80	2		



**FRAME BODY  
KHUNG XE**

**F20**



**Service Item**

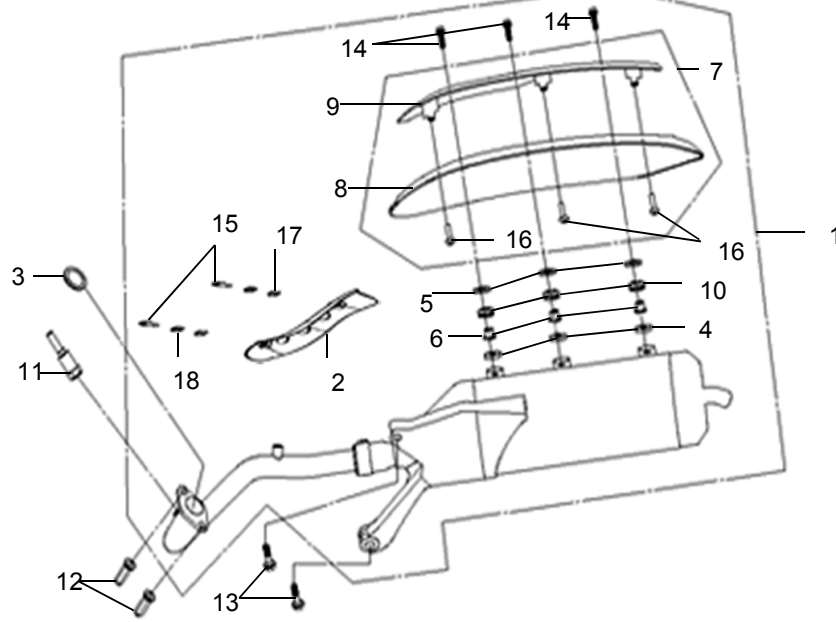
**Phụ Tùng Cung cấp**

32 96211-08000

STT No.	Mã số phụ tùng Part No.	Tên phụ tùng Description	UNIT PRICE	VJ7	Mã E/C.	Ghi chú Remark
29	95801-06040-07	Flange Bolt 6*40	1.30	2		
30	95801-08012-08	Flange Bolt 8*12	1.30	3		
31	9621A-05000-00	STEEL BALL SET (# 5MM) 100Pcs	22.10	26		
32	9621A-08000-00	STEEL BALL 8 (100pcs/set)	37.00	19		

**EXHAUST MUFFLER**  
**ỐNG XẢ**

**F21**



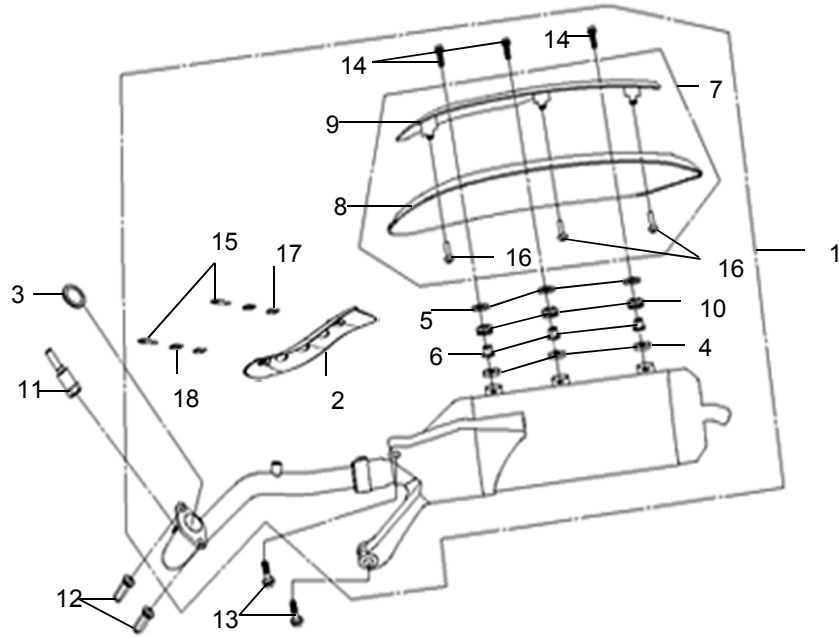
**Service Item**  
**Phụ Tùng Cung cấp**

1	18000-VJ3-000
	18000-VJ3-900
2	18241-VJ3-000
3	18291-M9B-000
7	18317-VJ3-000
8	18318-VJ3-000
9	18319-VJ3-000
11	3789A-A5L-000
12	90043-HMA-000
13	90103-H6B-000
14	93401-06022-07
15	93500-05008-0G
16	93903-25280

STT No.	Mã số phụ tùng Part No.	Tên phụ tùng Description	UNIT PRICE	Mã E/C.		Ghi chú Remark
				VJ7		
1	18000-VJ3-0003	Exhaust Muffler Ass'y	765.60	1		
2	18241-VJ3-000	EX. Pipe Protector		1		
3	18291-M9Q-0000	Exhaust Pipe Gasket	2.00	1		
4	18292-F3E-000	Protector Packing A	4.10	3		
5	18293-F3E-000	Protector Packing B	1.00	3		
6	18295-VT3-0000	Collar M6	1.70	3		
7	18317-VJ3-000	Muff. Protector Assy.		1		
8	18318-VJ3-000	Muffler Protector A		1		
9	18319-VJ3-000	Muffler Protector B		1		
10	18321-L1A-000	Protector Rubber	3.30	3		
11	37890-A5L-0002	O2 Sensor	462.70	1		
12	90043-HMA-0000-VN	Cap Nut 8mm	4.00	2		
13	90103-H6B-000	Flange Bolt 8*38		2		
14	93401-06022-07	Bolt-Washer 6*22	1.00	3		

**EXHAUST MUFFLER**  
**ỐNG XẢ**

**F21**

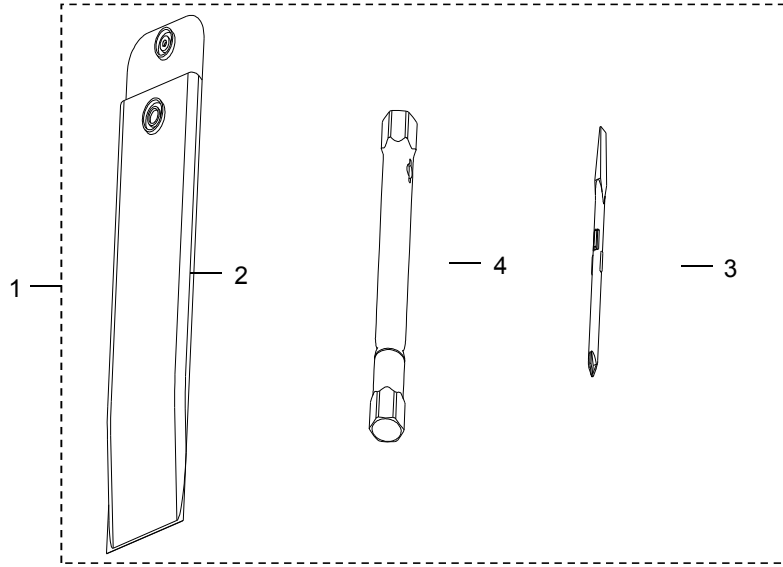


**Service Item**  
**Phụ Tùng Cung cấp**

STT No.	Mã số phụ tùng Part No.	Tên phụ tùng Description	UNIT PRICE	Mã E/C.		Ghi chú Remark
				VJ7		
15	93500-05008-OA	Pan Screw 5*8	0.40	2		
16	93903-25280	Tapping Screw 5*12	0.80	3		
17	94101-05700	Plain Washer 5mm		2		
18	94111-05700	Spring Washer 5mm		2		

**TOOLSET**  
**BỘ ĐỢNG DỤNG CỤ**

**F22**



Service Item

Phụ Tùng Cung cấp

1 89010-H01-900

STT No.	Mã số phụ tùng Part No.	Tên phụ tùng Description	UNIT PRICE	VJ7	Mã E/C.	Ghi chú Remark
1	89010-H01-900	Tool Set		1		
2	89101-A05-000	Tool Bag		1		
3	89102-M9Q-000	Drive Plus Minus 2		1		
4	89216-A02-010	Spring Plug Virench		1		